

ERA.T-76.1.3351

MUINSUSKAITSEAMET  
ARHIIV  
Nr. P-3423



EESTI NSV MINISTRIE NÕUKOGU RIIKLIK EHITUSKOMITEE  
**VABARIIKLIK RESTAUREERIMISVALITSUS**

OBJEKT: Tartu Nõukogude väljak

ŠIFFER NR. \_\_\_\_\_

TELLIJA: Tartu Linna TSN TK Kommunaalosakond

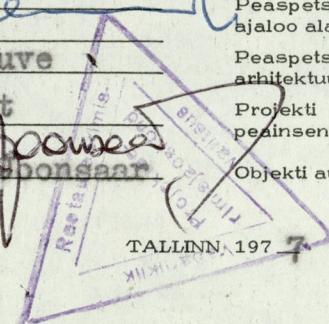
TEOSTAJA: Vabariiklik Restaureerimisvalitsus

Tartu Nõukogude väljaku eskiisprojekt

Köide II

Väljaku ajaloolised fotod.

Juhataja: 103e Peaspetsialist ajaloo alal: N.Raid  
Peainsener: K.Aluve Peaspetsialist arhitektuuri alal: R.Kivi  
Juhataja asetäitja: T.Erilt Projekti peainsener: J.Kulasalu  
Projekt-jaoskonna juhataja: A.Sponaar Objekti autor: R.Kivi



TARTU NÕUKOGUDE VÄLJAKU ESKIISPROJEKT

TÖÖ KOOSSEIS

A. K Ö I T E D

- I. Köide I - väljaku ajalooline kujunemine
- Köide II - väljaku ajaloolised fotod.
- Köide III - väljaku olukord anno 1977.a. Joonised.
- Köide IV - väljaku olukord anno 1977.a. Fotod.
- Köide V - väljaku eskiisprojekt.
- Köide VI - väljaku valgustite reklaami ja siltide eskiis.

B. P L A N Š E T I D

- 1. Väljaku olukord anno 1977.a. - 2 plansetti
- 2. Väljaku eskiisprojekt - 2 plansetti

REPROD SUURTURU PLAANIDEST

- I Tartu turu joonis 1682.a., Daniel Pechtel  
RAKA f.278 n.1 s.ü.XVI 29-b l.110
- II Wybersi revisjoniraamat. Turuäärsete majade loend  
1601.a. kahel lehel.  
RAKA f.995 n.1 s.ü. 21865 1.2 (I) ja 1.2p.
- III Tartu plaan (osa) 19 saj. lõpuveerandist majanumbritega.  
RAKA f.2623 n.1 s.ü. 2051 1.92
- IV Tartu Suurturg krundinumbritega 20 saj. algul.  
Valguskoopia.

SUURTURU HOONETE AJALOOLISED FOTOD

- 1. Suurturg raekojaga. Vaade Kivisilla otsalt.  
L.Höflinger ja Ed.Ivanson, Tartu vaadete album. Värviline  
litograafia. EM K 1859-18
- 2. Suurturg raekojaga.  
Karl Anton Schulz, Rathhaustrasse. Litograafia.  
EM K 2310
- 3. Suurturg raekojaga ja tähetorniga.  
19 saj. litograafia.
- 4. Suurturg, S-külg ja raekoda.  
G.Fr. Schlater, Mark-Platz in Dorpat. Litograafia.  
EM K 2198.
- 5. Suurturg vaatega Kivisilla poole.  
G.Fr. Schlater. Koloreeritud lito 1852.  
EM K 1053.
- 6. Suurturu N-külg raekojaga.  
G.Fr.Schlater.  
EM K 523.
- 7. Vana ülikoolimaja raekoja platsil.

- 4
- K.A.Senff. Trükk.  
EM K 2150-2
8. Kivisild Suurturu S-Küljega  
G.Fr.Schlater.
  9. Suurturg vaatega Kivisilla poole  
RAKA f.2073 n.1 s.ü. 511.6
  10. Suurturg vaatega Kivisilla poole  
FFFRKA 0-29656
  11. Suurturg vaatega Kivisilla poole.  
FFFRKA 0-29399
  12. Suurturg raekojaga .  
RAKA f.1843 n.1 s.ü.220 l.177
  13. Suurturg raekojaga.  
FFFRKA 0-29667
  14. Suurturg raekojaga.  
FFFRKA 0-29303
  15. Suurturg raekojaga..  
RAKA f.2073 n.1 s.ü.5 l.2
  16. Raekoda Suurturuga.  
Th.John
  17. Raekoda Suurturuga  
"Estonia" film 1913.  
FFFRKA 0-48133
  18. Vaade raekojale läbi Kivisilla kaareava.  
Ed.Selleke 1939 (?)  
FFFRKA 0-91718
  19. Suurturg raekojaga..  
Parikas 1930-ndad a.  
KM KO neg. 8852
  20. Raekoja keskrisaliit.  
Stamm 1928  
TRÜ KAK 6
  20. Raekoda koos Toomepoolsete majadega.  
Ed.Selleke 27.IX 1939  
FFFRKA 0-29305
  22. Raekoda Suurturu ülemise poolega.  
1930-ndad a.  
FFFRKA 0-61992
  23. Raekoda Suurturu N-küljega 1930-ndate a. algul.  
FFFRKA 0-29424

- 5
24. Suurturg, S-külje ülemine pool.  
J.Päasuke 1914.  
EM 249:159
  25. Suurturg, S-külje alumine pool.  
F.Liblik ( 1900-1917)  
FFFRKA 91286
  26. Suurturg nr.3.  
(1917-1940)  
TRÜ KAK 7
  27. Suurturg, N-külje alumine pool.  
FFFRKA 0-29413
  28. Suurturg nr.5.  
Enne 1917.a.  
TRÜ KAK
  29. Suurturg, N-külje alumine pool.  
RAKA f.1843 n.1 s.ü.223 l.225
  30. Suurturg nr.13. Ressource'i maja; ukse muutmine
  31. } RAKA f.2623 n.1 s.ü. 149 l.194
  32. } Suurturg, N-külje alumine pool  
Th.John
  33. Suurturg, N-külje alumine pool.  
FFFRKA 0-29455
  34. Suurturg, N-külje alumine pool.  
P.Parikas ( 1908-1913)  
KM KO neg.310
  35. Suurturg nr.2 Jaani t.nurgal  
Carl Schulz  
EM 542:103
  36. Suurturg nr.6.  
EM 349:163
  37. Suurturg nr.6 ja nr.8.  
FFFRKA 0-29651
  38. Suurturg nr.6 ja osa nr.8.  
H.Staden  
FFFRKA 0-92567
  39. Suurturg nr.2,4,6.  
KM KO B-37; 2971
  40. Suurturg nr.6  
Stamm 1928  
TRÜ KAK

- 6
41. Suurturg nr.6 ja nr.8 Rüütli t. algusega.  
Tallinna Ajaloomuuseum 12609.
  42. Suurturg nr.6 ja nr.8 Rüütli t. algusega.  
Album "Dorpat" J.S.  
EM 599:6
  43. Suurturg nr.6 ja nr.8 Rüütli t.  
F.Liblik.  
FFFRKA 0-91281
  44. Suurturg nr.6 ja nr.8 Rüütli t. RAKA f.402 n.5 s.ü. 2051 l.10
  45. Suurturg nr.6 ja nr.8.  
Tartu Linna arhiiv 146.
  46. Suurturg nr.8  
ca 1915.a.  
TRÜ KAK 164.
  47. Suurturg nr.8 ja nr.10  
"Estonia" film 1913.a.  
FFFRKA 0-48137
  48. Suurturg nr.8  
ca 1915.a.  
FFFRKA 0-40783
  49. Suurturg nr.8 platsipoolne fassaad  
E.Selleke  
TRÜ KAK
  50. Suurturg nr.10- nr.20  
FFFRKA 0-29397
  51. Suurturg nr.12 ja nr.14  
1932.a.  
RAKA f.2110 n.1 s.ü.155
  52. Nõukogude väljak nr.8  
R.Valdre ca 1970.a.
  53. Suurturg nrd. 10-14  
Ed. Selleke ca 1920  
FFFRKA 0-29619
  54. Kompanii 1. Barclay maja Emajõe-poolne külg  
TRÜ KAK
  55. Suurturg nr.20, Tartu Pank  
Schnakenburg's Dorpater Kalender 1885.  
RAKA raamatukogu 1945-1290.

56. Suurturg nrd. 18. ja 20, Tartu Pank.  
RAKA f.402 n.5 s.ü. 2051 l.63
57. Suurturg nr.20  
H.Staden ca 1910.a.  
FFFRKA 2-1244
58. Suurturg nr.20 ja Kivisilla kioski sissepääs  
(1900-1917)  
FFFRKA 0-91716
59. Turg Tartu Panga vastas Emajõe kaldal  
RAKA f.402 n.5s.ü. 2051 l.45
60. Suurturg nr.16  
F.Liblik (1900-1917)  
FFFRKA 0-91290
61. Suurturg nrd. 7-11  
F.Liblik (1900-1917)  
FFFRKA 0-91287
62. Kivisild  
Staden  
FFFRKA 2-1259
63. Ülikooli tänava majad raekoja taga.  
Ed. Selleke 9.X 1941.a.  
FFFRKA 0-91666

FOTO-REPROD SUURTURU MAJADE PROJEKTIDEST

1. Tartu Pank-Dorpatser Bank 1877.  
RAKA f.2623 n.1 s.ü. 114,1.10
2. Dorpatser Bank 1908 gegenwärtige Fassade  
RAKA f.2623 n.1 s.ü. 148 l.26
3. Dorpatser Bank 1908 projectierte Fassade.  
RAKA f.2623 n.1 s.ü.148 l.26
4. Suurturg krunt 5 maja fassaad 1880.a.  
RAKA f.2623 n.1 s.ü. 118 l.32
5. Suurturg krunt 5, kus fassaad 1880.a. H.V.Stavenhagen.  
RAKA f.2623 n.1 s.ü. 118 l.32

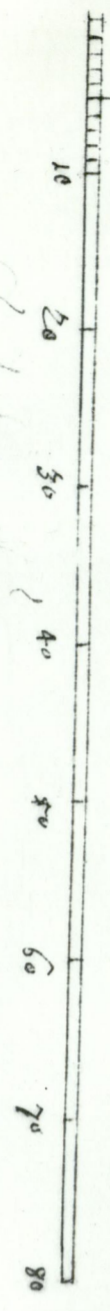
- 8
6. Grenzsteini poehoone Kivisilla juures 1888.a.
  7. RAKA f.2623 n.1 s.ü. 126 l.32
  8. Suure Gildi hoone Kompanii, t.nr.1 projekt 1910.a. A.Eichhorn  
RAKA f.2623 n.1 s.ü. 154 l.368
  9. Suurturg krunt 17.maja katuseärklid 1896.a. C.Bescht  
RAKA f.2623 n.1 s.ü. 136 l.134
  10. Suurturg krunt 40.fassaadi muutmine 1908.a. F.Kangro  
RAKA f.2623 n.1 s.ü. 148 l.97
  11. Suurturg krunt 40 maja esivaade ümber tehtud rõduga 1910.a.  
A.Eichhorn.  
RAKA f.2623 n.1s.ü.154 l.368
  12. Suurturg krunt 18 maja raudkambri ehit. (s.a.) F.Kangro
  13. Suurturg krunt 18 fassaadi muutmine 1907.a. H.Hellat
  14. Küüni t. nr.8.vaateakna suurendamine (s.a.) F.Kangro  
RAKA f.2623 n.1 s.ü. 150 l.164
  15. Küüni t. nr.3.1891.a. O.Schröder  
RAKA f.2623 n.1 s.ü. 129 l.51
  16. Suurturg krunt 12 maja akende suurendamine Jaani t. poolel  
1909.a. R.Pohlmann ja V.Kessler.  
RAKA f.2623 n.1 s.ü.149 l.110
  17. Suurturg krunt 12 maja akna suurendamine Suurturu poolel  
1909.a. R.Pohlmann ja V.Kessler  
RAKA f.2623 n.1 s.ü. 149 l.97
  18. Suurturg nr.12 ja nr.13 majade ümberehitus 1910.a.
  19. R.Pohlmann ja V.Kessler .  
RAKA f.2623 n.1 s.ü.150 l.30
  20. Rütli t.1 poekese ehitamine 1906.a. O.Schröder  
RAKA f.2623 n.1 s.ü.147 l.2
  21. Suurturg krunt 7 fassaadi muutmine 1910.a.  
RAKA f.2623 n.1 s.ü.153 l.8
  22. Suurturg krunt 7 Küüni t.poolne fassaad 1910.a.  
RAKA f.2623 n.1s.ü.153 l.8
  23. Suurturg kruntide 12 ja 13 asendiplaan 1877.a. R.Rech  
RAKA f.2623 n.1 s.ü.535 l.30 (74)
  24. Elumaja fassaadi muutmine  
RAKA f.3828 n.1 s.ü. 216 l.99



- 9
27. Suurturg krunt 6 asendiplaan  
RAKA f.2623 n.1 s.ü.153 l.5
28. Suurturg krunt 15 maja akende suurendamine O.Schröder,  
V.Kessler  
RAKA f.2623 n.1 s.ü. 149 l.78
29. Suurturg krunt 17 maja õuehooned 1894.a. C.Bescht.
30. RAKA f.2623 n.1 s.ü.133 l.96,97
31. Suurturg krunt 18 fassaad 1915.a. F.Kangro  
RAKA f.2623 n.1 s.ü.156 l.163
32. Suurturg krunt 7 maja ümberehitus 1871.a. M.Rötscher  
RAKA f.2623 n.1 s.ü. 114 l.10
33. Rütli t. nr.8 (krunt 100) maja ärkli ehitamine 1903.a.  
R.Pohlmann  
RAKA f.2623 n.1 s.ü.144 l.16.

KASUTATUD LÜHENDID

RAKA -ENSV Riiklik Ajaloo Keskarhiiv  
f. -fond  
n. -nimistu  
s.ü. -säilitusühik  
l. -leht  
KM -ENSV TA Kreutzwaldi nimeline Kirjandusmuuseum  
KO -käsikirjade osakond  
EM -ENSV Etnograafiamuuseum  
K -kunst  
FFFRKA -Filmi-, Foto- ja Fonodokumentide Riiklik Keskarhiiv  
TRÜ -Tartu Riiklik Ülikool  
KAK -Kunstiajaloo kabinet  
N -nord (külg)  
S. -süd ( " )  
s.a. -sine anno

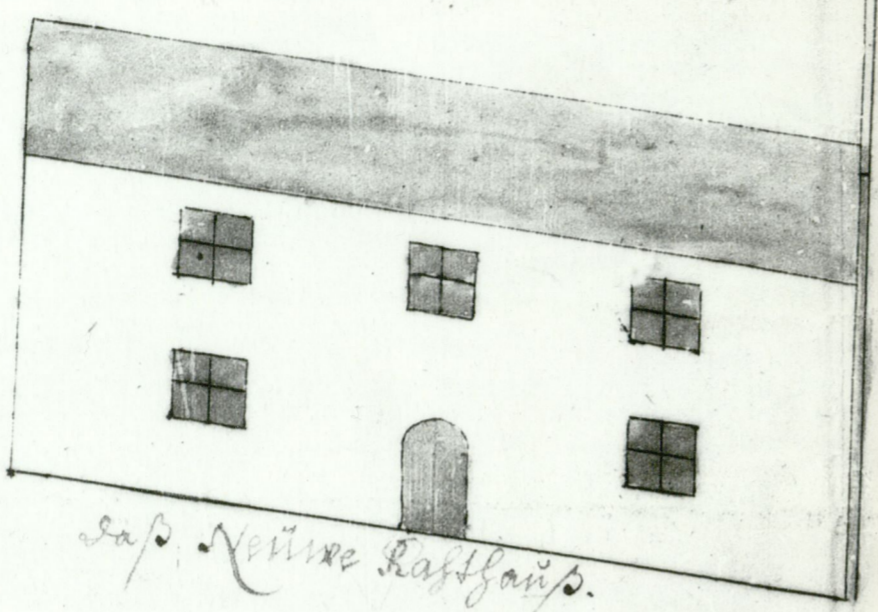
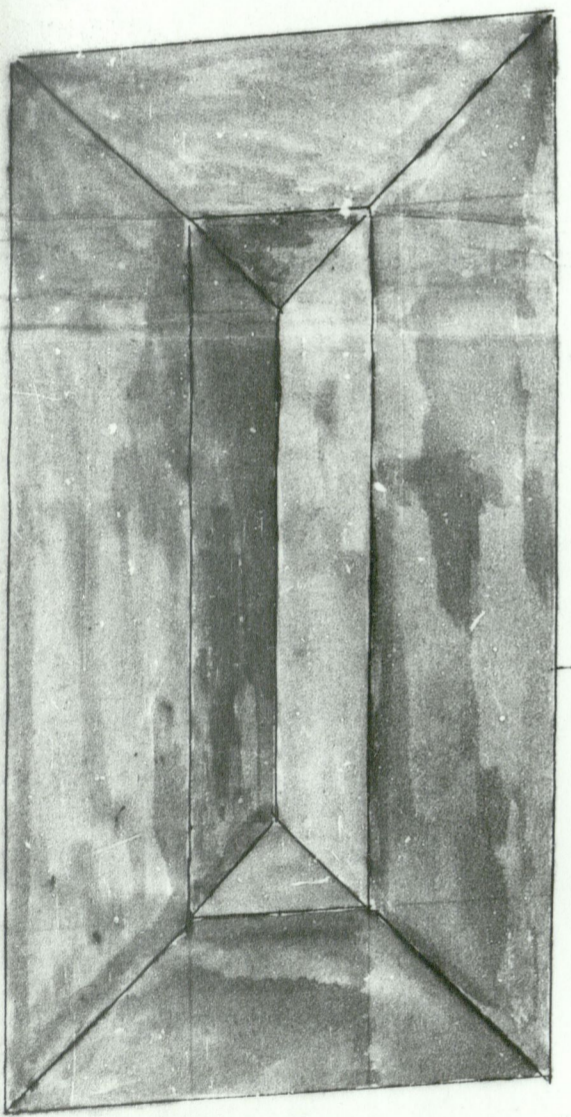


Stall 1/2

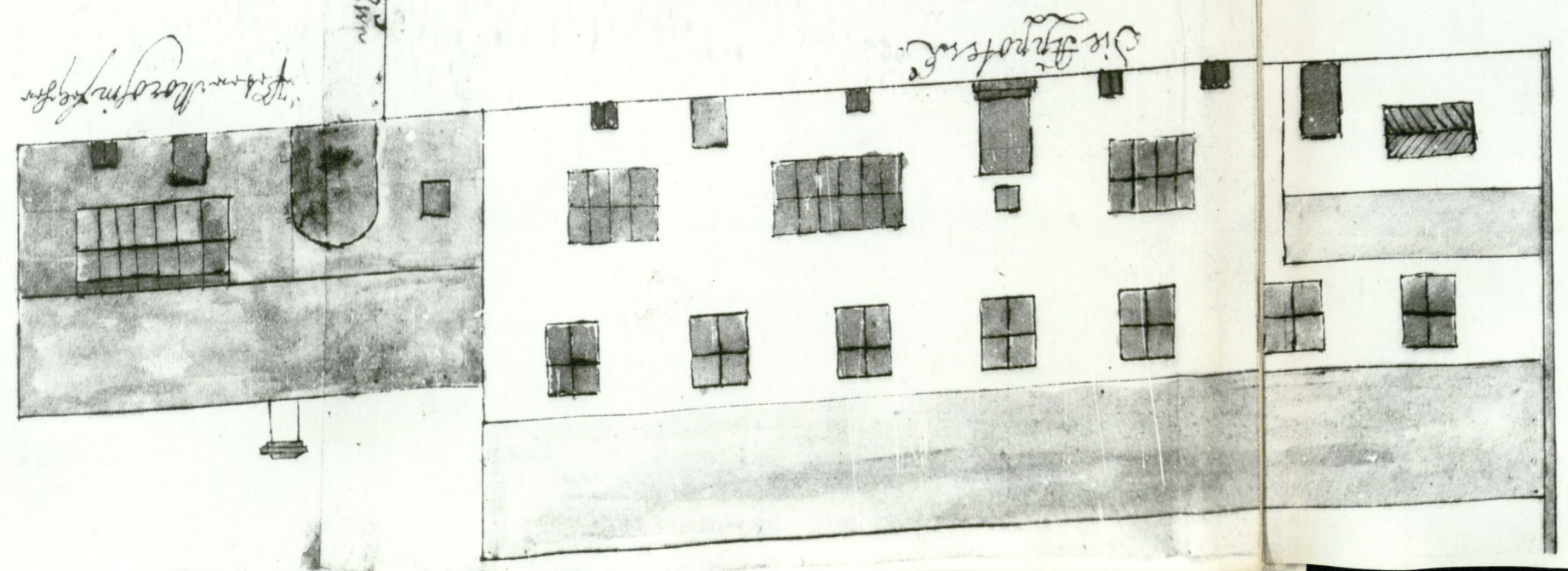
Die Seite des Hofes

152

Man kann sich vorstellen, dass die Gebäude 55 F. hoch sind, was ungefähr die Höhe der Türme ist.

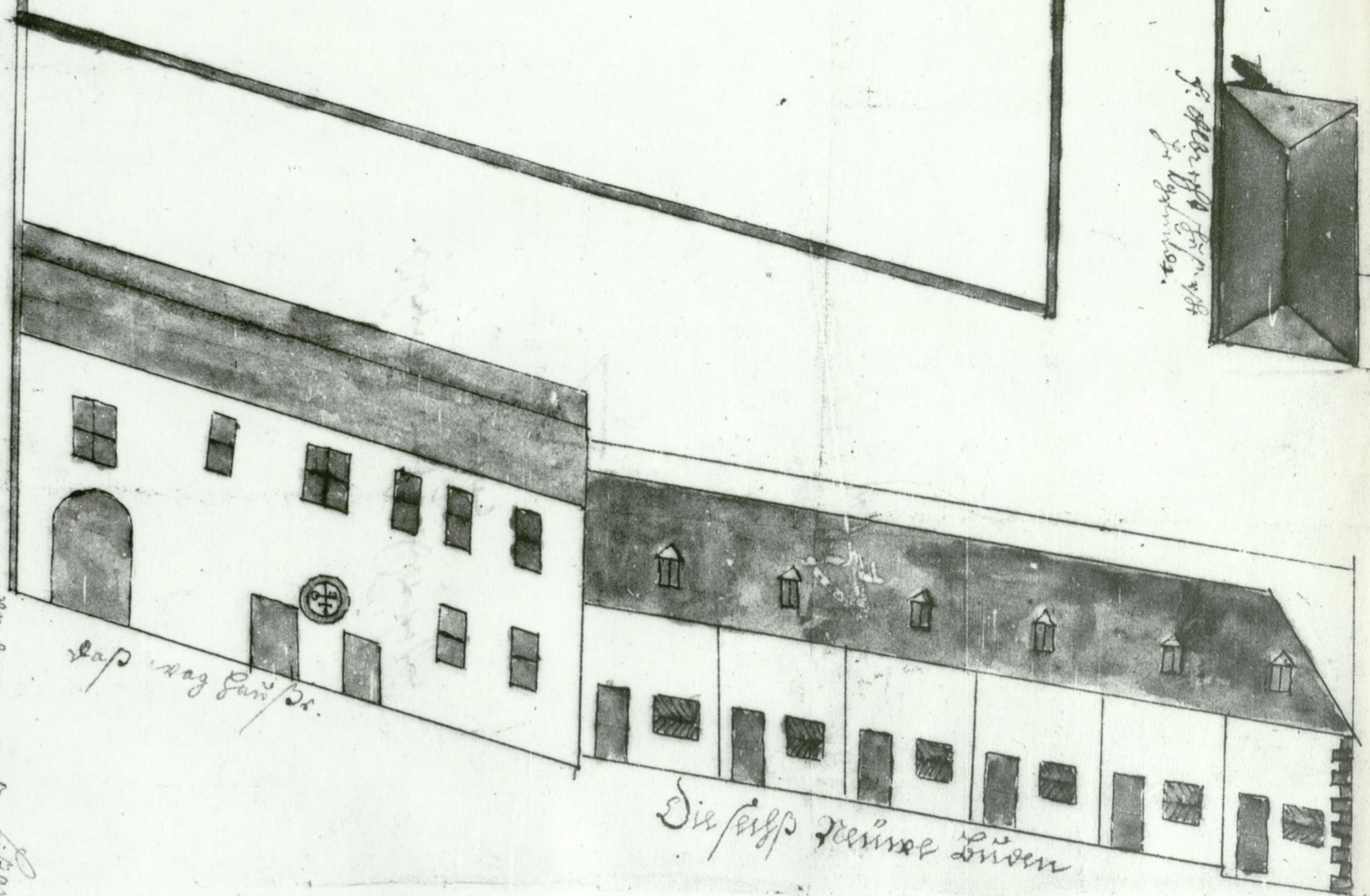


Cap. Neue Kastanien



Die Apotheke

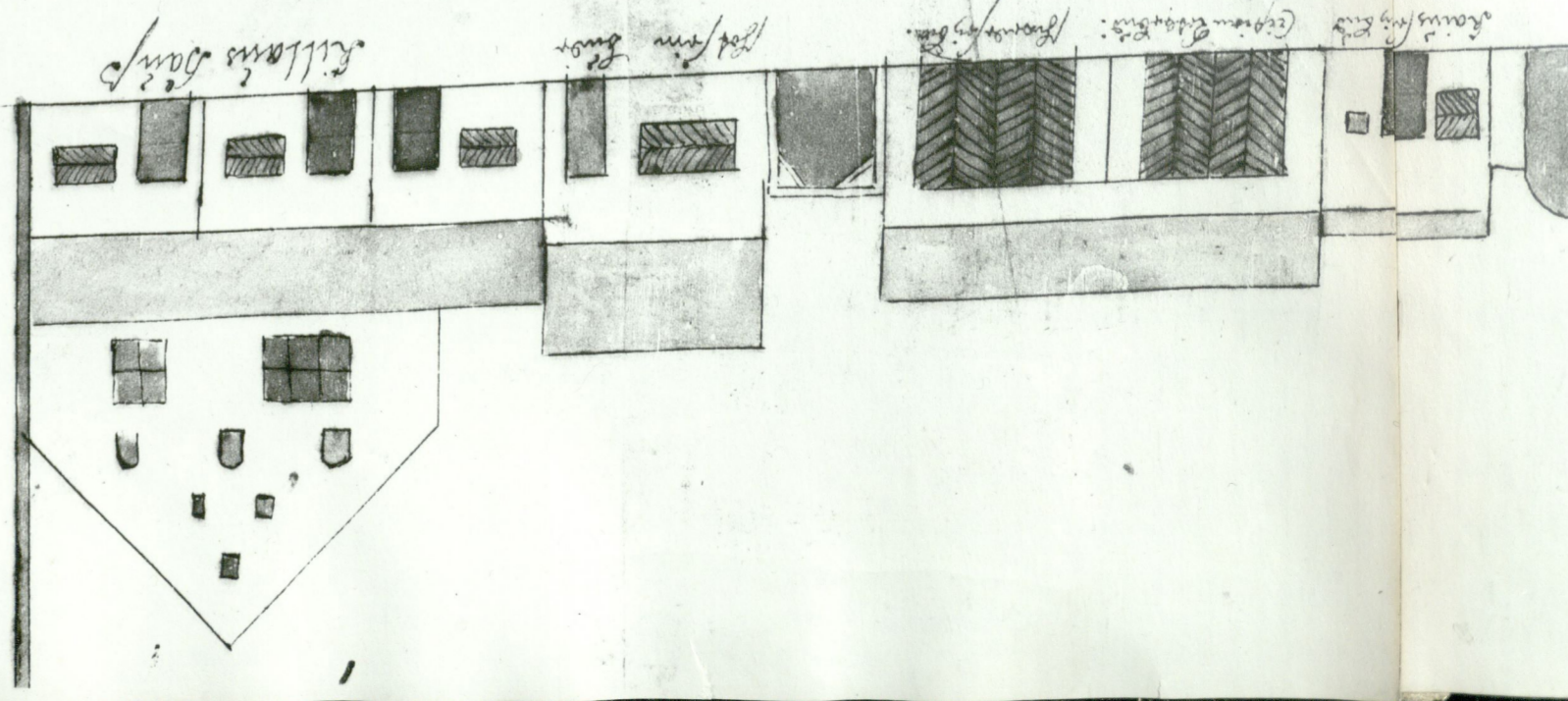
die Front



Cap. Mag. für die

Die sechs neuen Löwen

Man kann sich vorstellen, dass die Gebäude 55 F. hoch sind, was ungefähr die Höhe der Türme ist.



Killens Hof

die Front

Man kann sich vorstellen, dass die Gebäude 55 F. hoch sind, was ungefähr die Höhe der Türme ist.

die Front

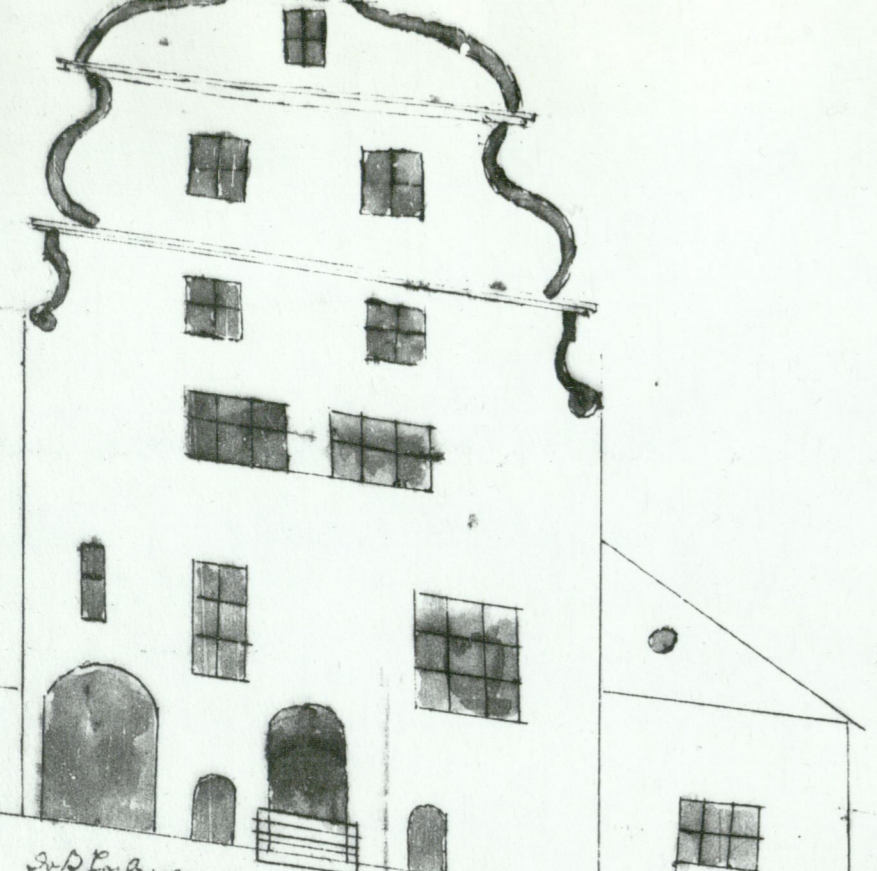
die Front

Man kann sich vorstellen, dass die Gebäude 55 F. hoch sind, was ungefähr die Höhe der Türme ist.

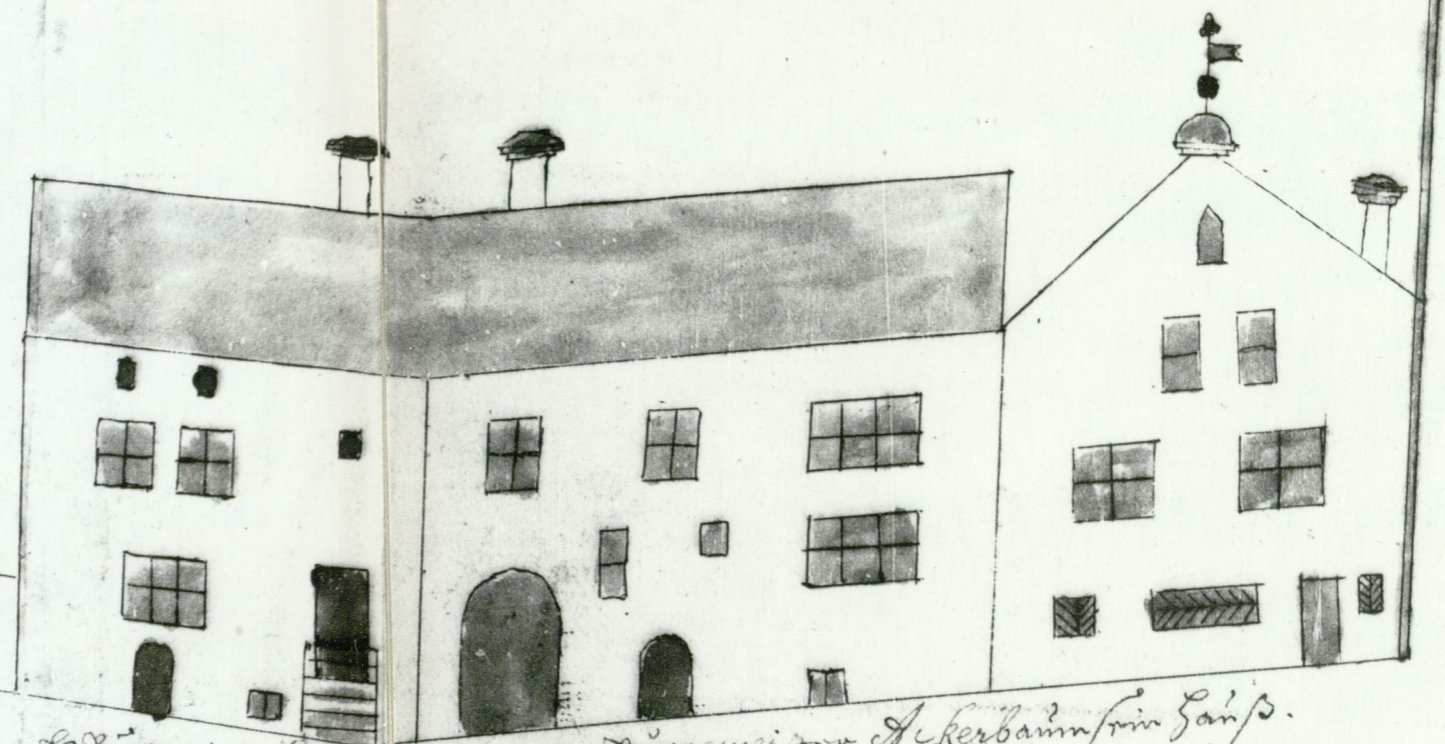
Man kann sich vorstellen, dass die Gebäude 55 F. hoch sind, was ungefähr die Höhe der Türme ist.

1717

St. Michael's Church

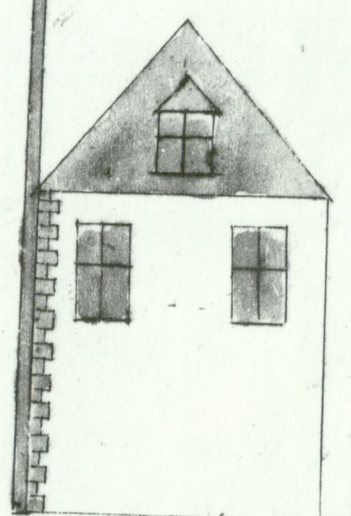


St. Michael's Church. St. Michael's Church. St. Michael's Church.

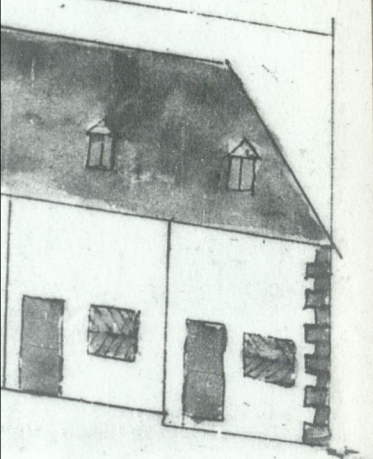


St. Michael's Church. St. Michael's Church. St. Michael's Church.

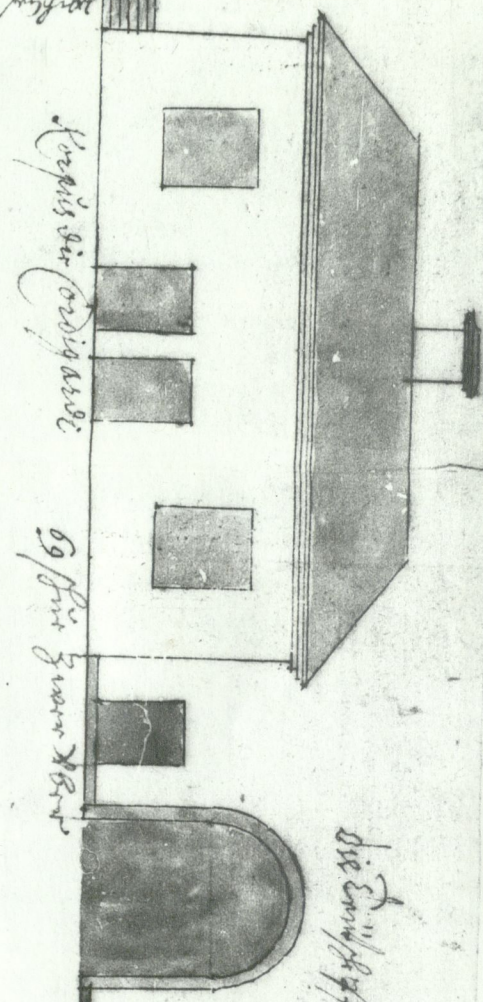
St. Michael's Church



St. Michael's Church



St. Michael's Church

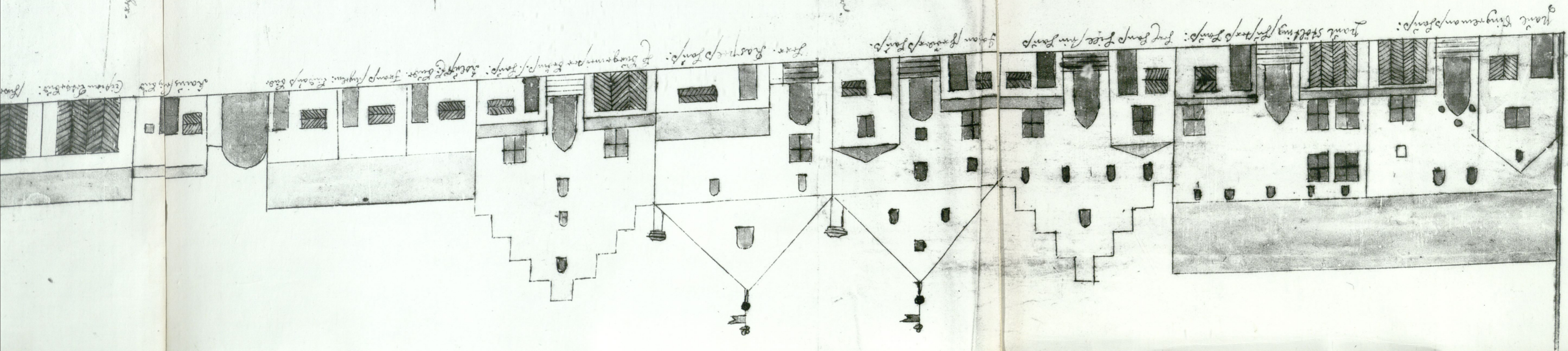


St. Michael's Church

St. Michael's Church

St. Michael's Church

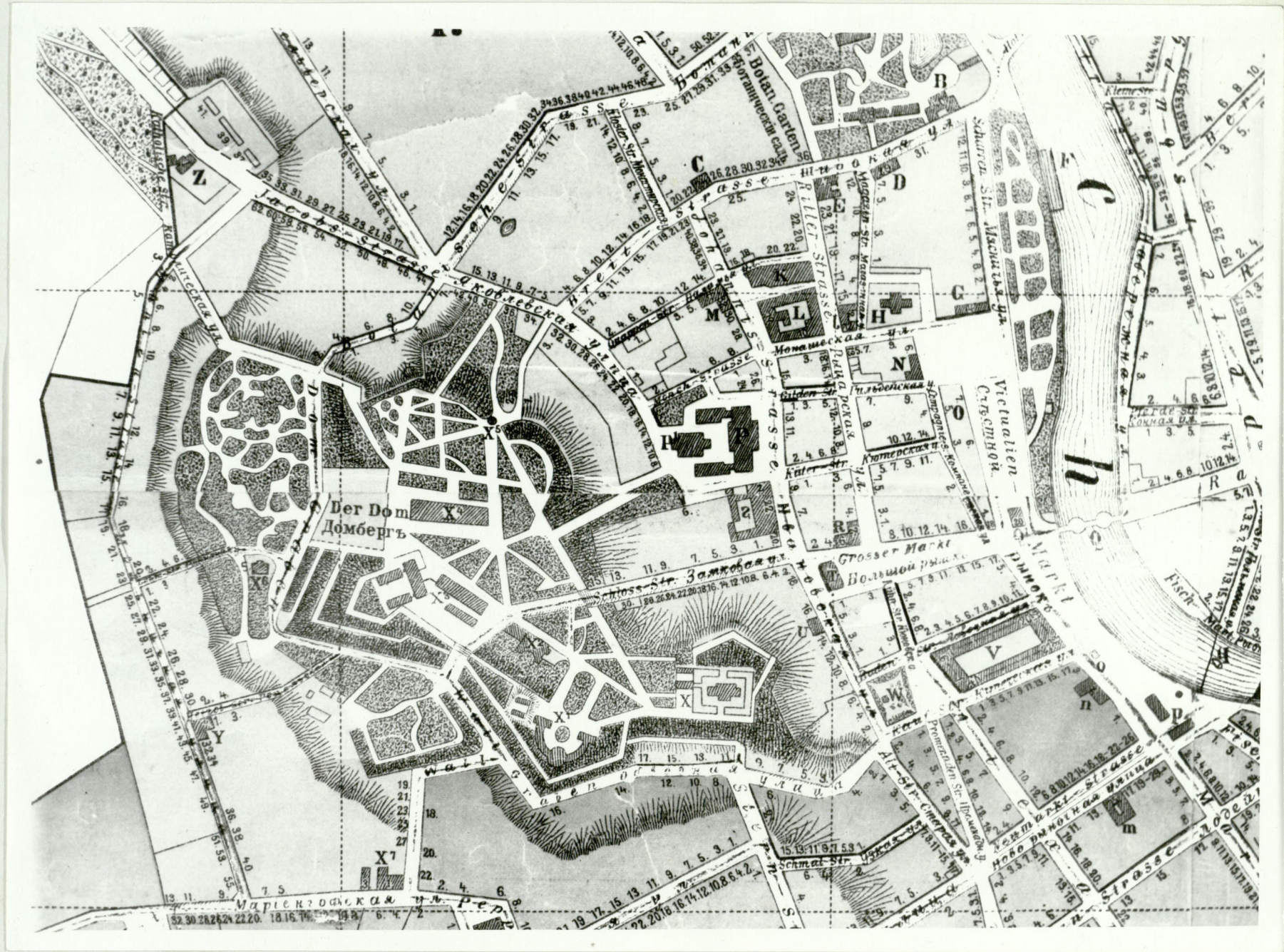
St. Michael's Church



St. Michael's Church. St. Michael's Church. St. Michael's Church.

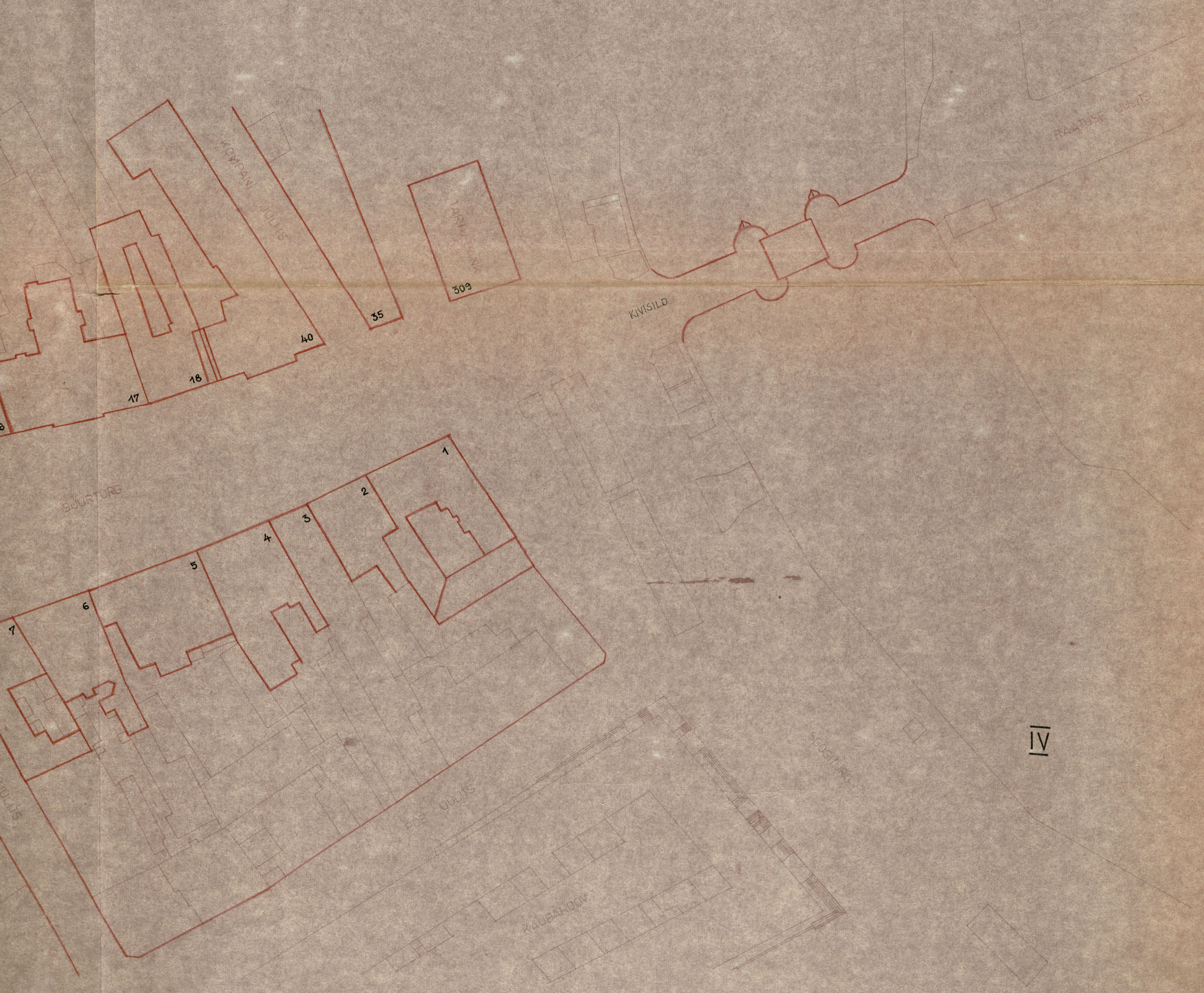
St. Michael's Church





8







1



2



3



4





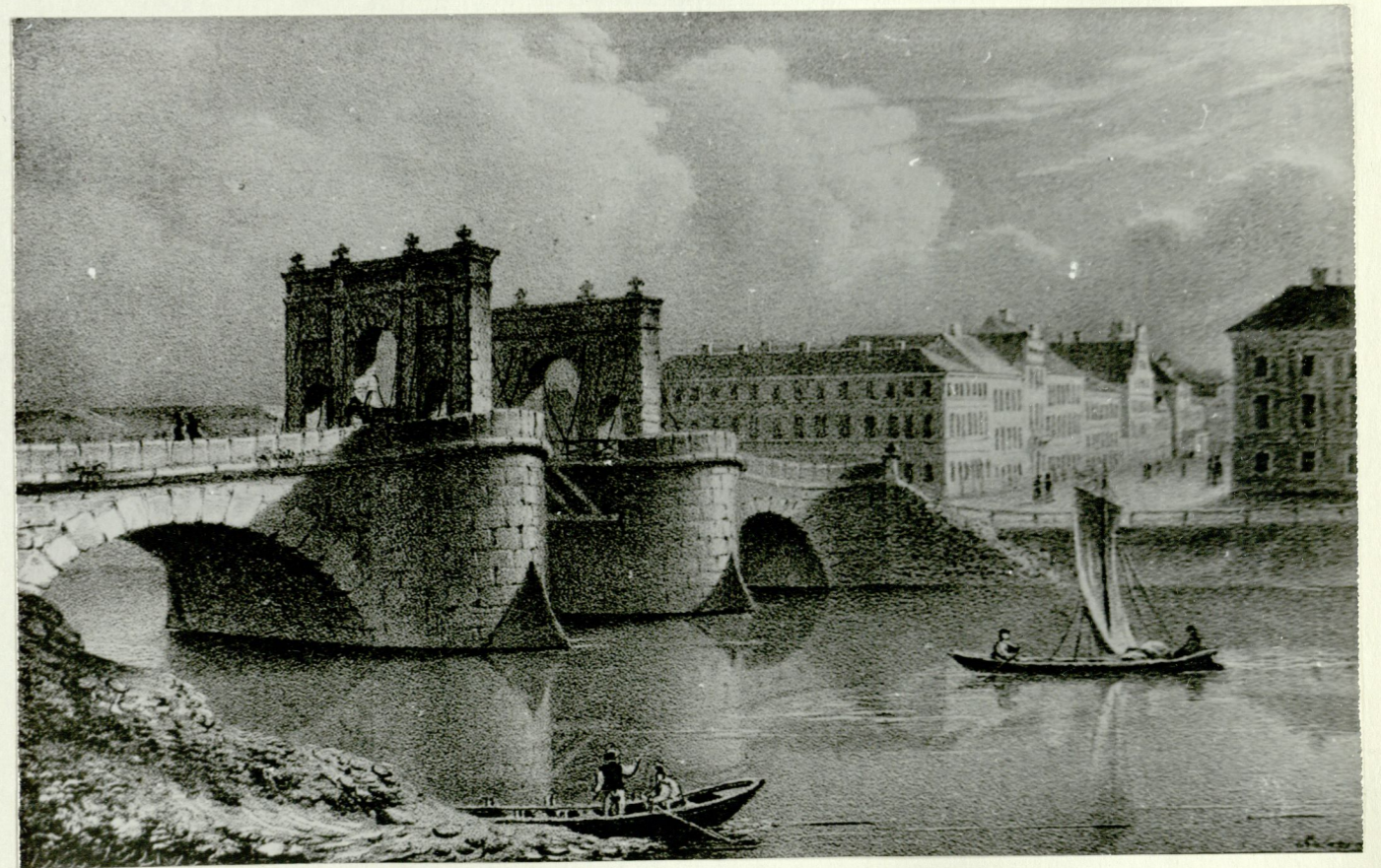
5



6



7



8





10



11



12



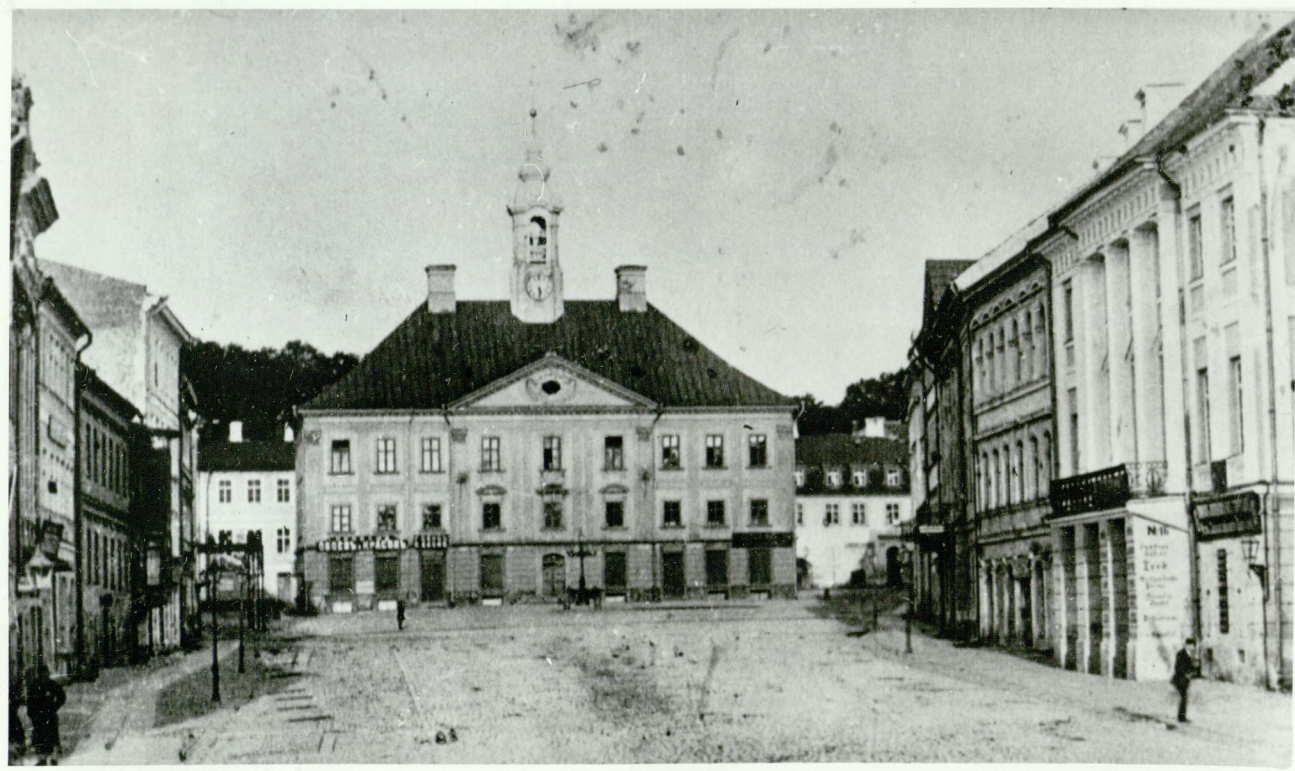
13



14



15



16



17



19



18



20



21



22



23



24



25



26



27



28



29



30



31





32



33



34



35



36

37



38



39



40



41



42



43



44



45



46



47



48



49



50



51



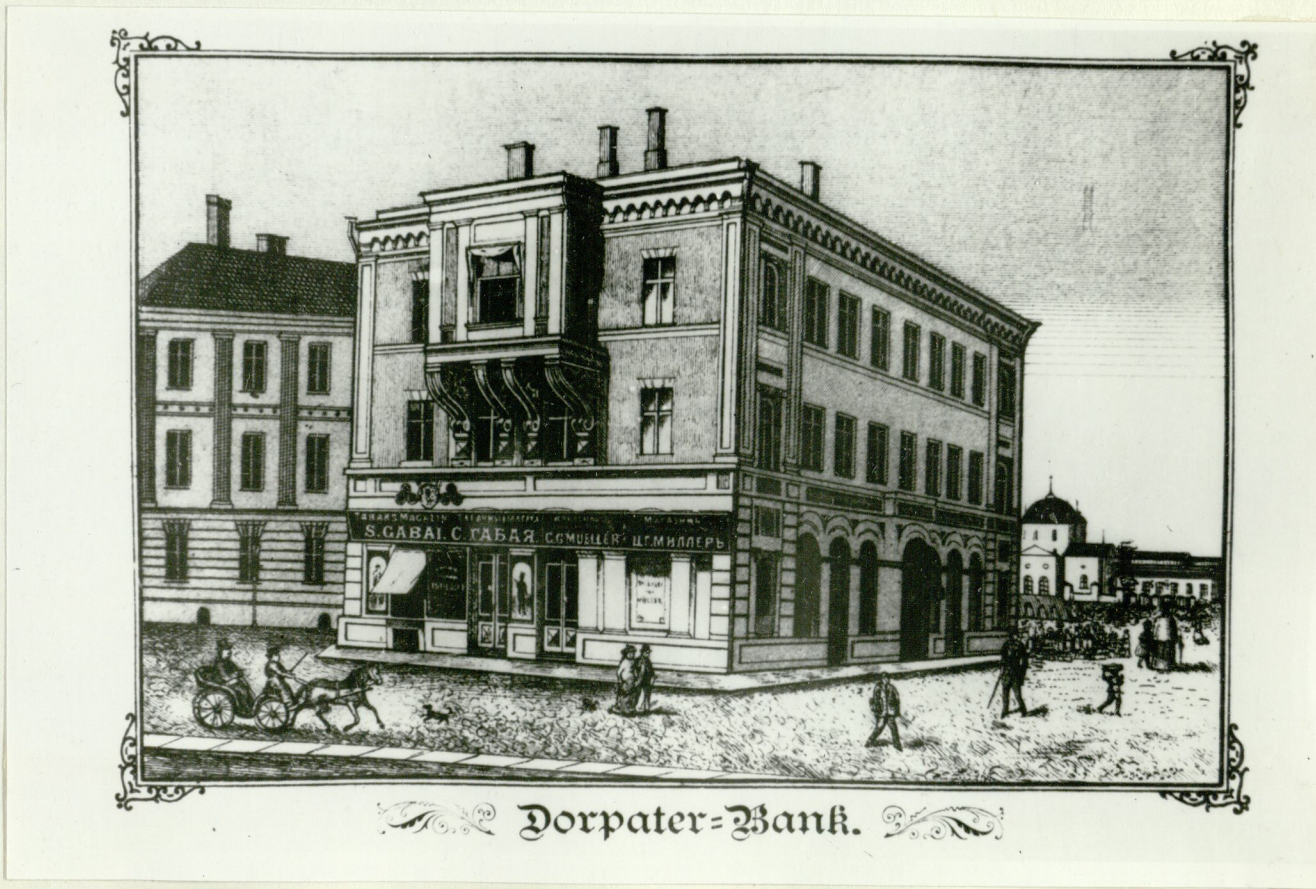
52



53



54



Dorpat-Bank.

55







57



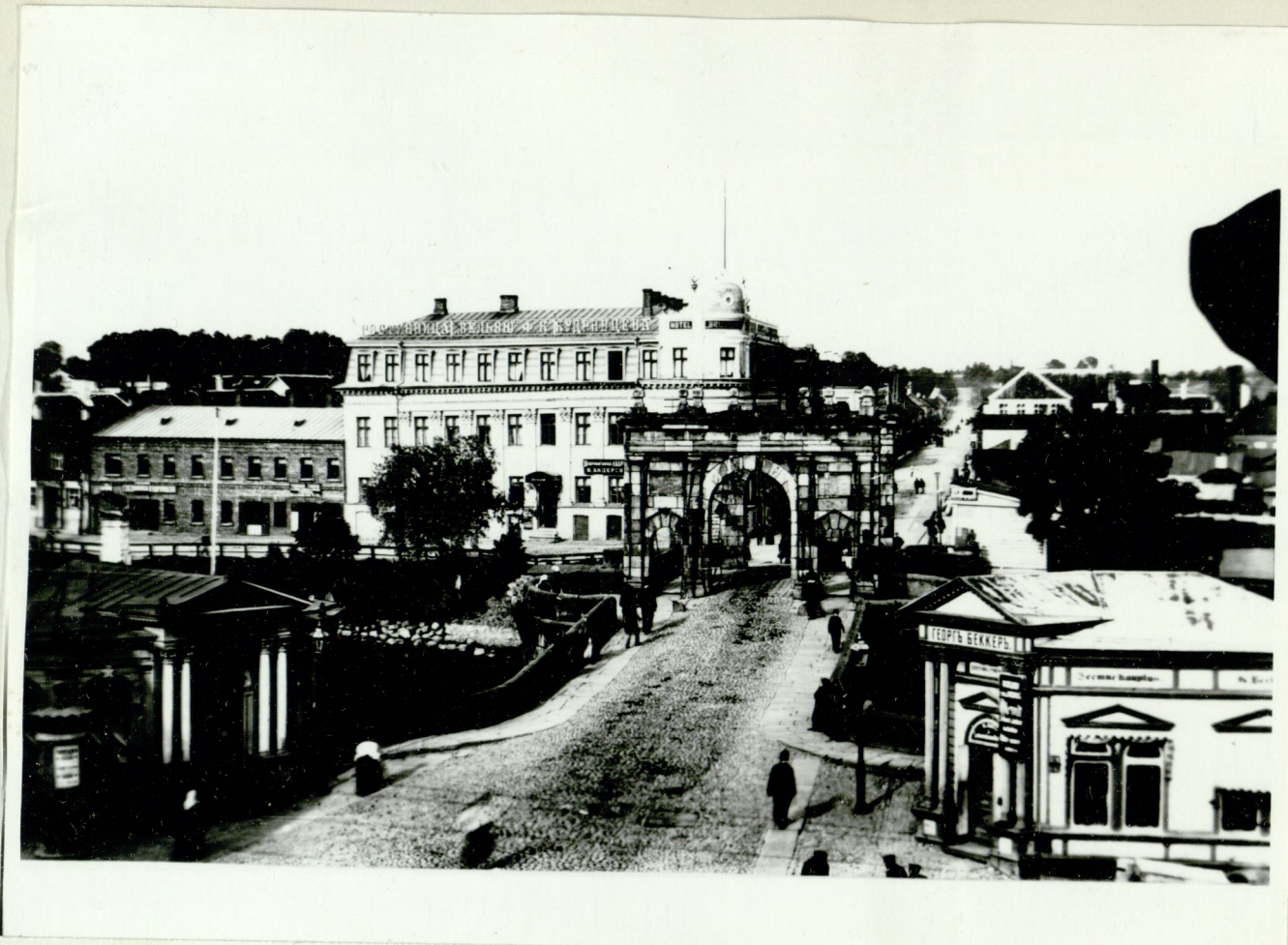
58



59



60



61



62



63

*1871 August 1871  
G. Schickel*

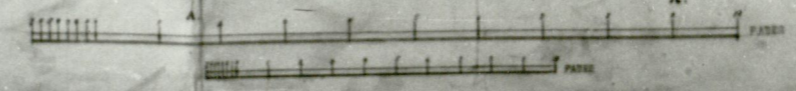
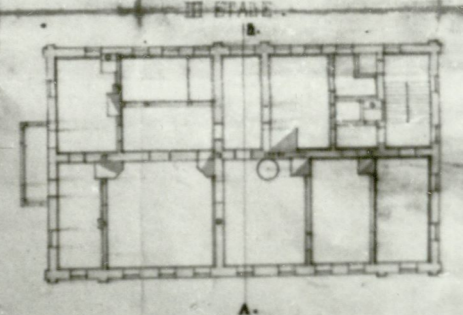
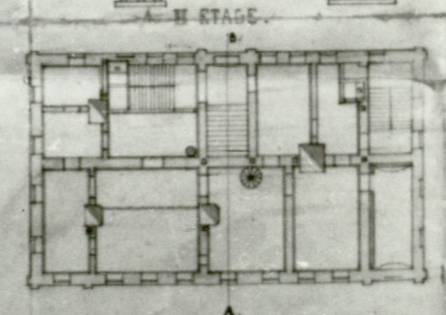
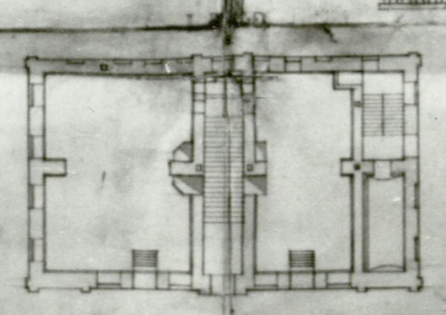
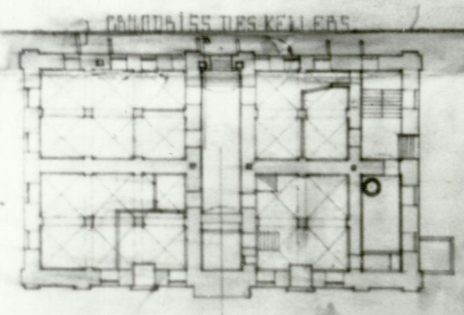
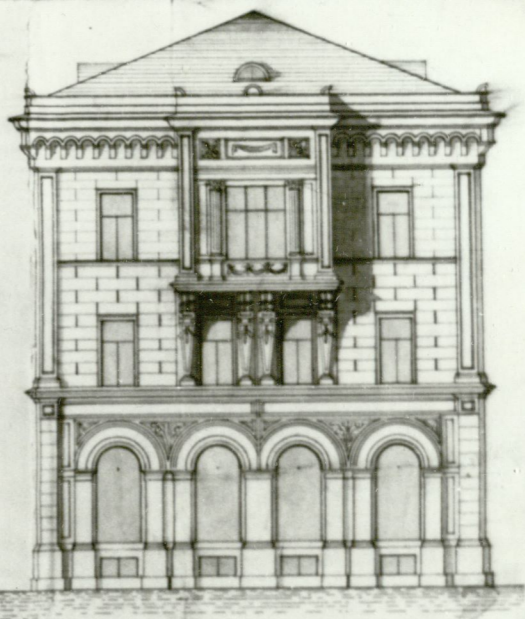
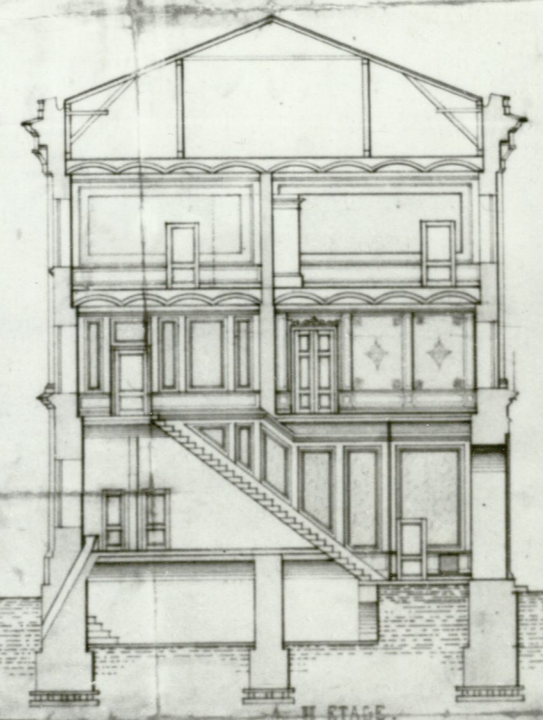
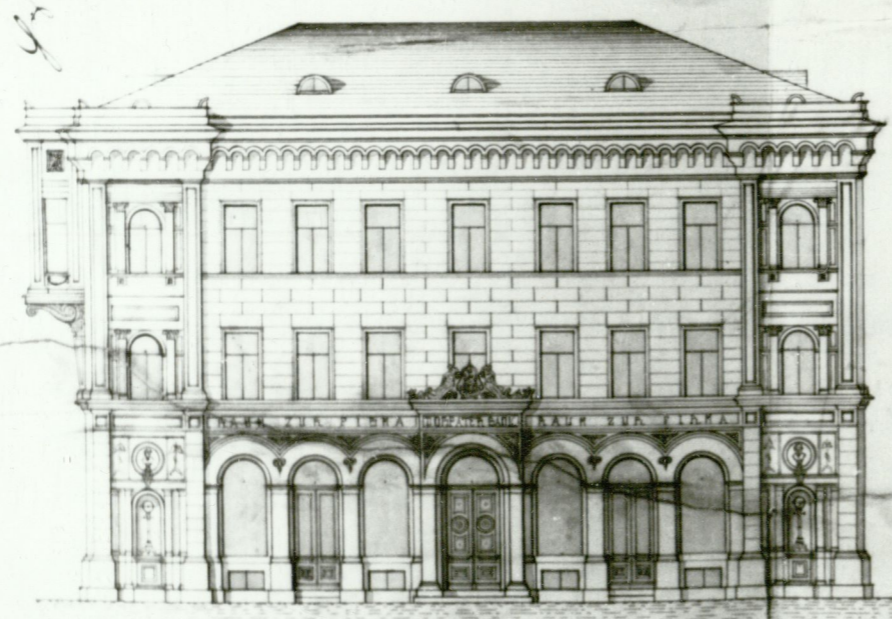
PLAN

ZUR ERBAUUNG EINES BANKGEBÄUDES FÜR  
DIE STADT DORPAT:

VORDER ANSICHT

DURCHSCHNITT NACH A.B.

GIEBEL ANSICHT



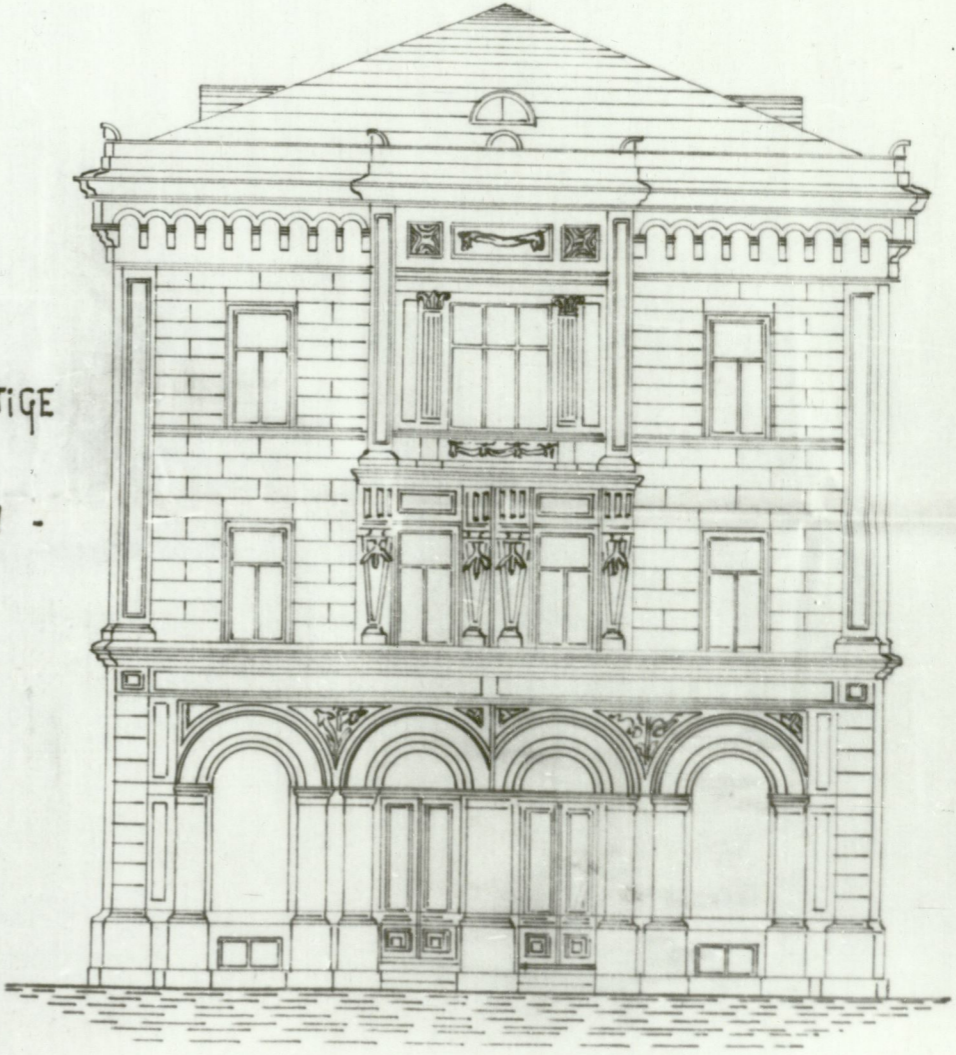
*Architekt. Schuljahr C. de Stenning  
1871*

*H. Beckh  
1871*

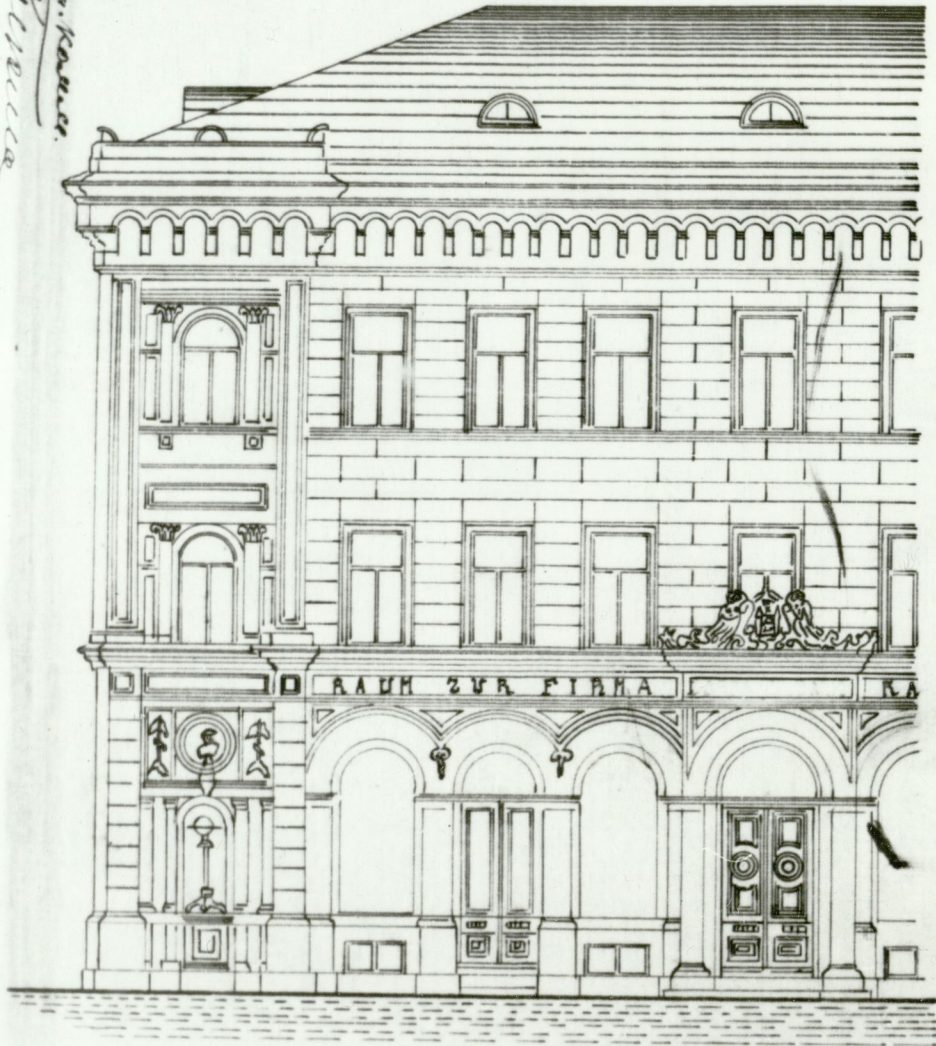
№ 14  
14 января 1908 г.



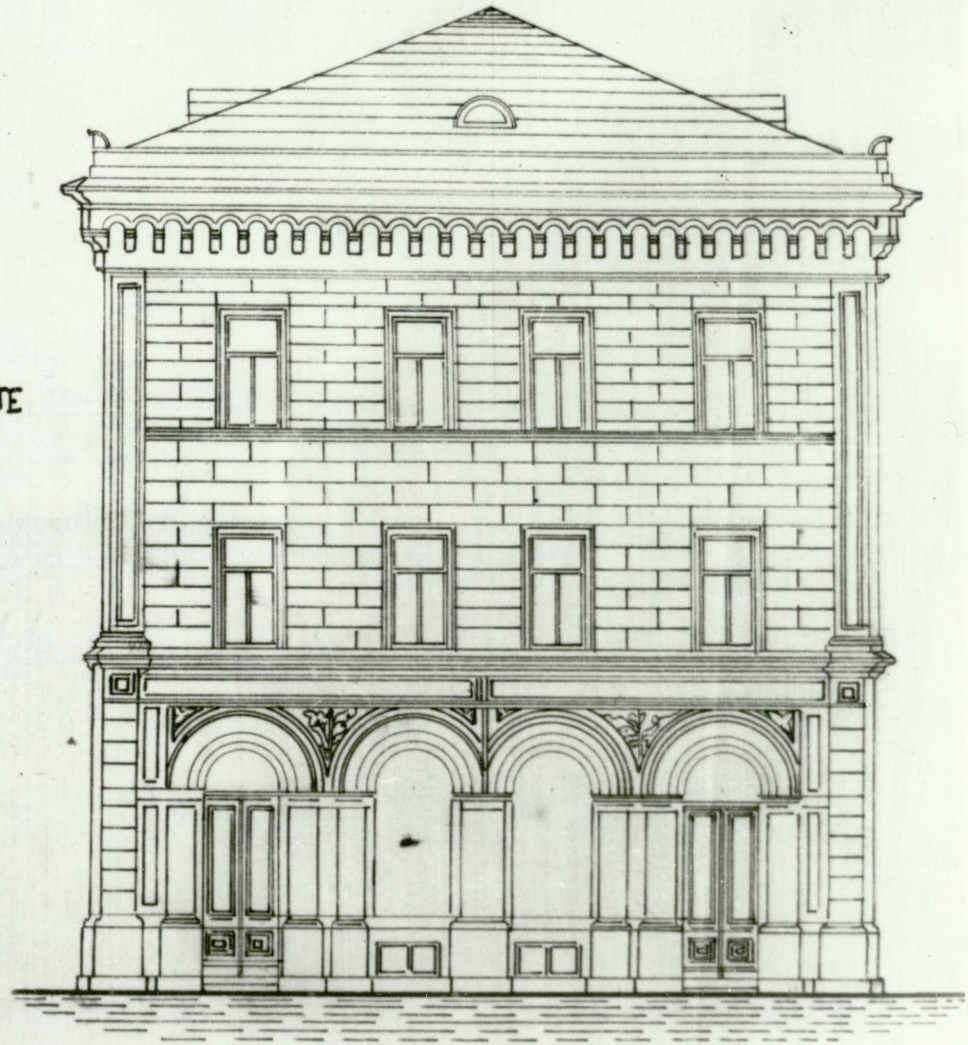
ГЕГЕНWÄRTIGE  
- FASADEN -



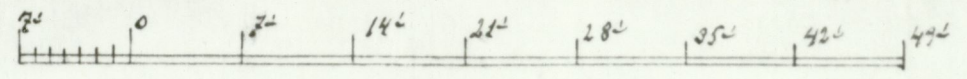
Кирк. Овчарова. Казань.  
П. П. Штроссманн



PROJEKTIERTE  
- FACIEN -



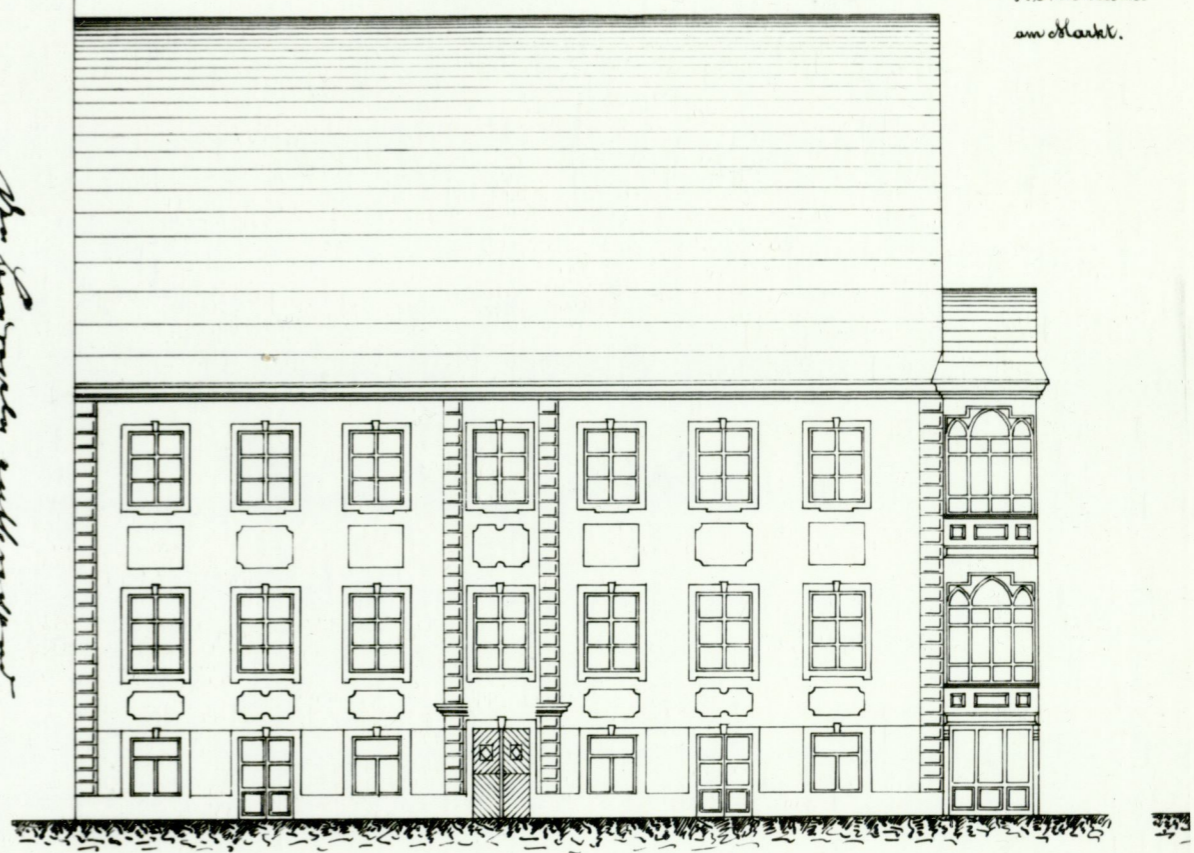
П. П. Штроссманн  
Казань-апол.



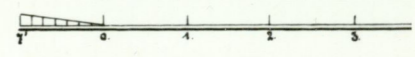
Gegenwärtige Fassade

Project  
zum  
Umbau des im Stinchi  
Wohnhauses  
am Markt.

Der Bauingenieur  
P. Hill. Architekt



Maassstab

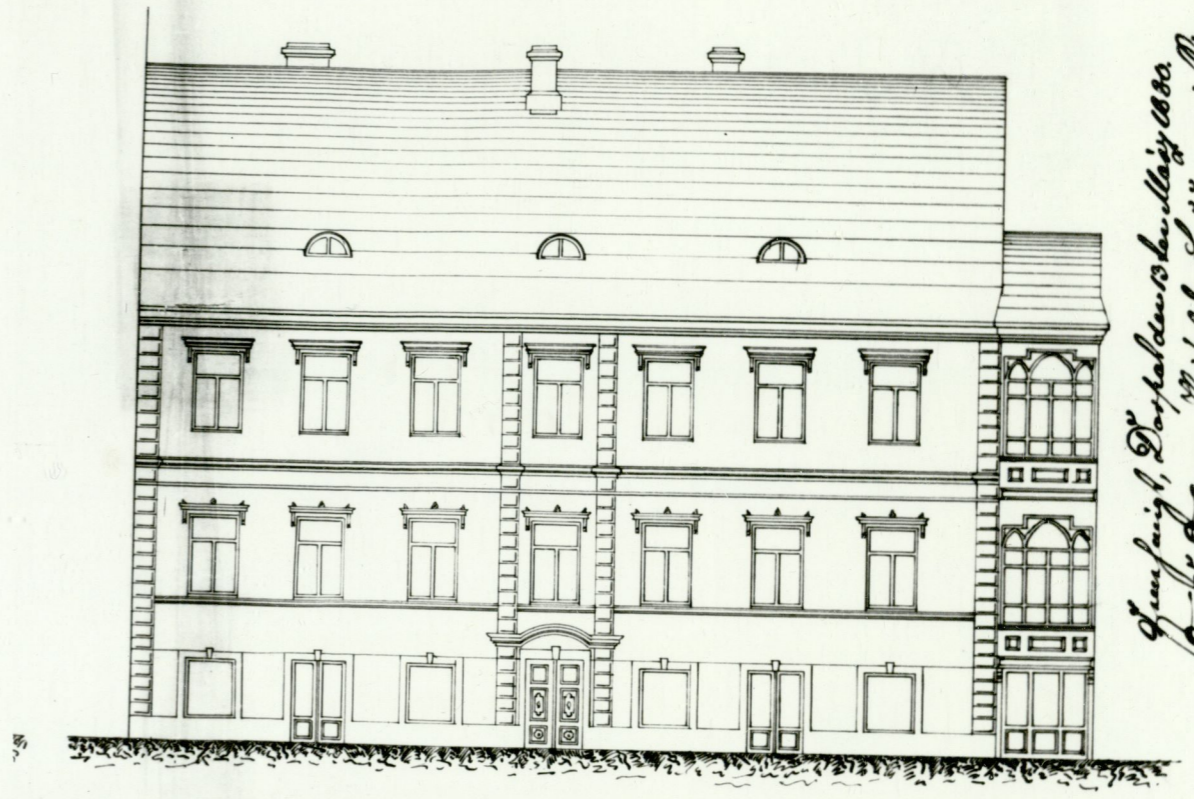


J. B. Meyer 1870

c.l.

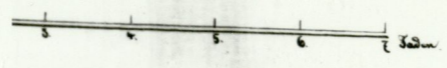
in Steinhielmchen  
chauss  
akl.

Façade zu Umbau



ausgeführt, Dorpaldenstraße 1870.  
O. G. Kame. Projekt. G. Lammigk

masstab

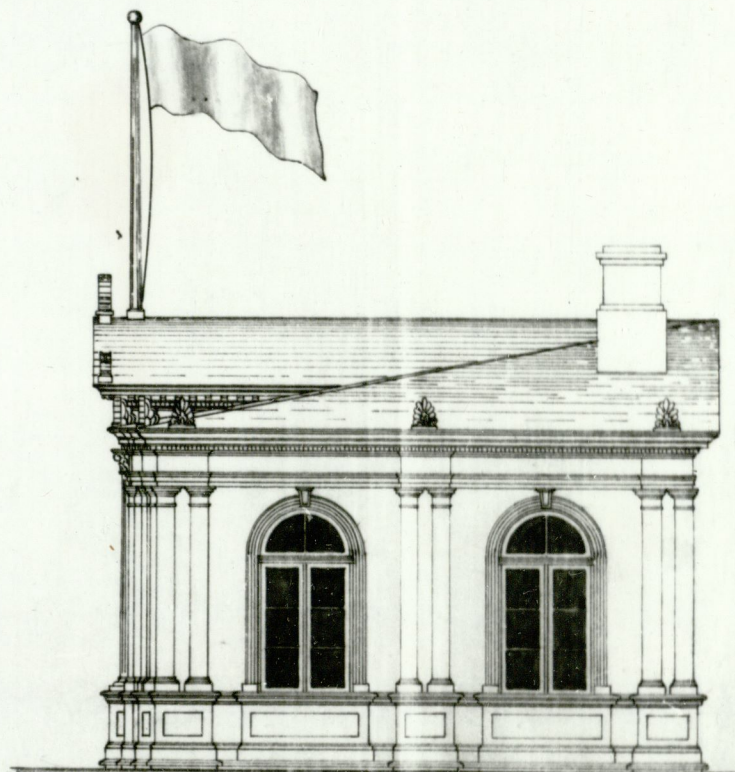
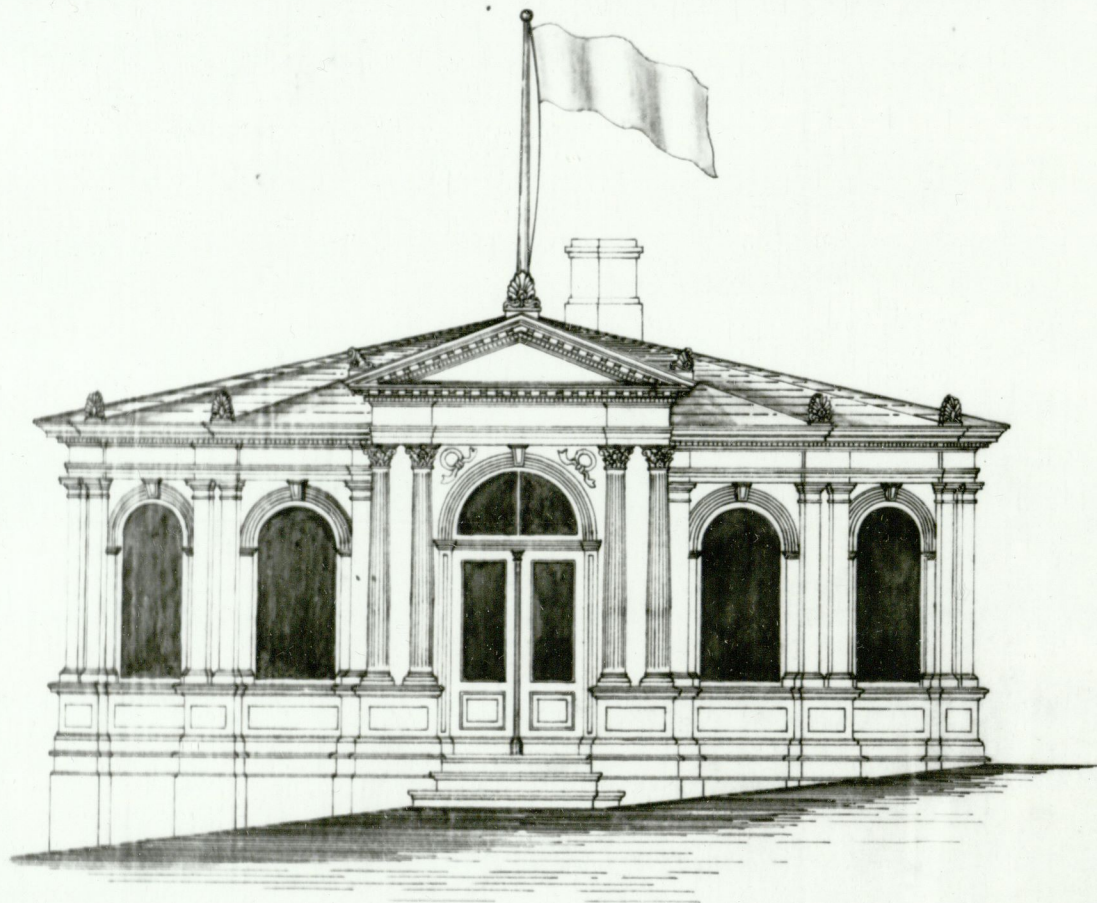


in Ausführung von  
H. Stenroos

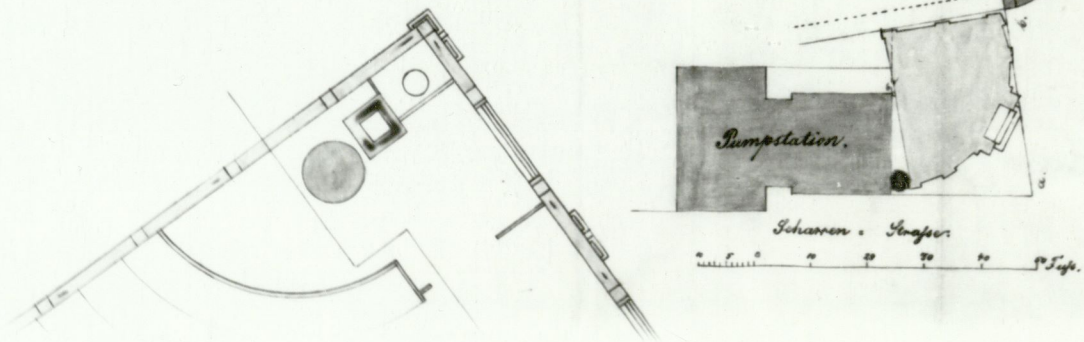
# Plan

eines Verkaufsorts für A. Grenzstein in Dorpat 1888.

*Handwritten initials*



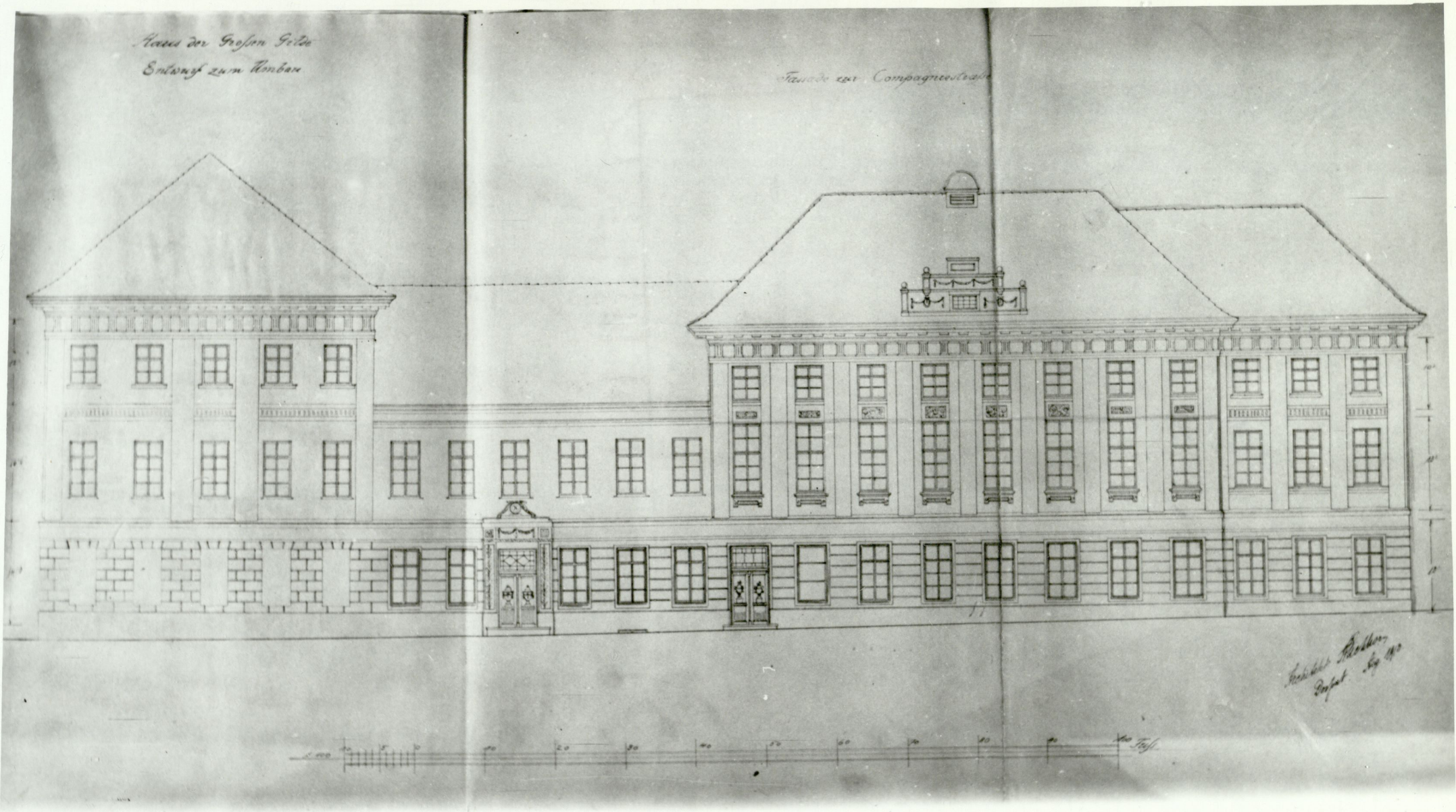
*Handwritten notes:*  
 Schwanfingel, D. Halden, 71  
 (Handwritten address)  
 M. H. 11 D. 91. 1. 1. 1.



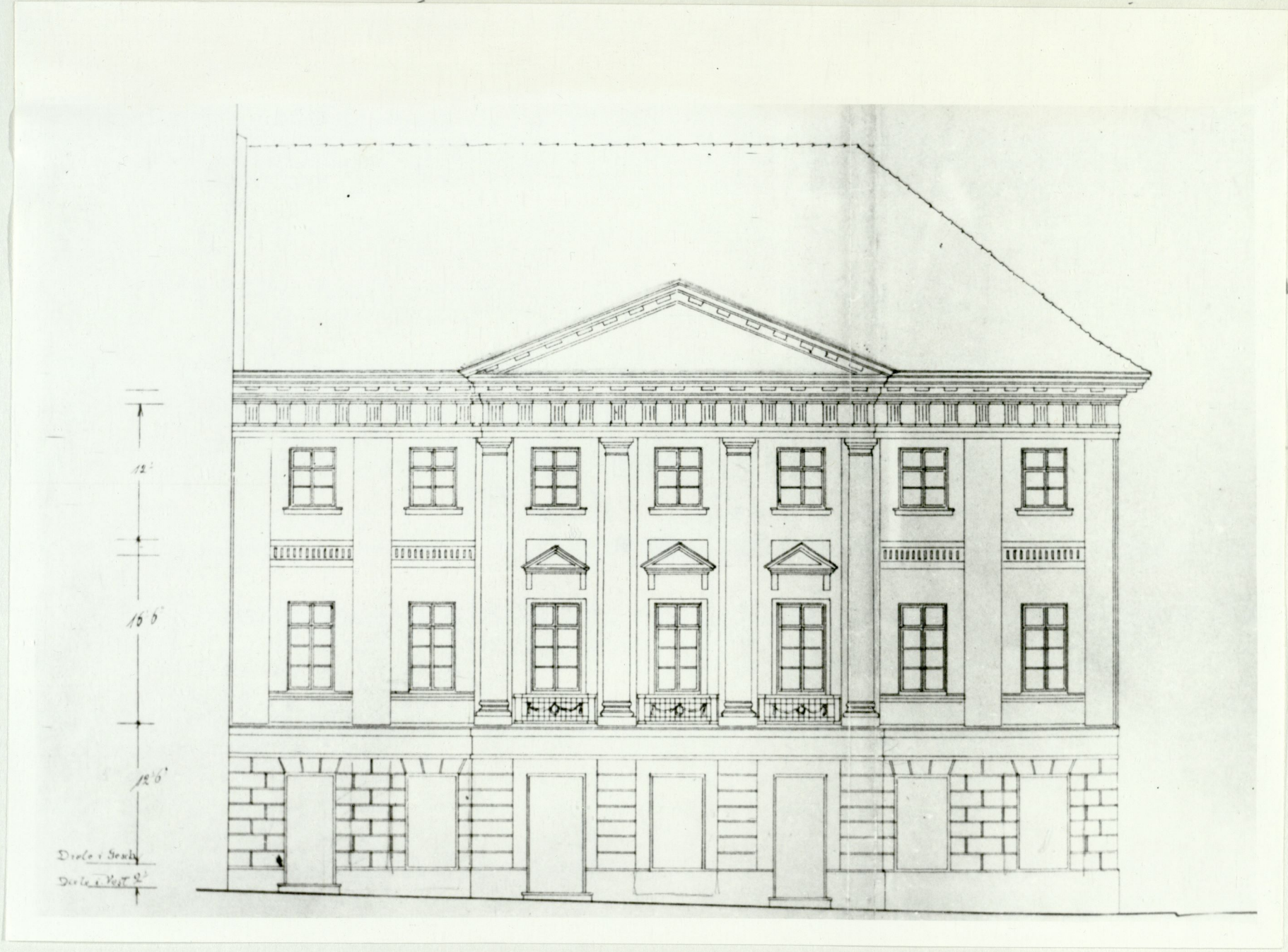
*Handwritten notes:*  
 Also Langen...  
 P. H. 11 D. 91. 1. 1. 1.



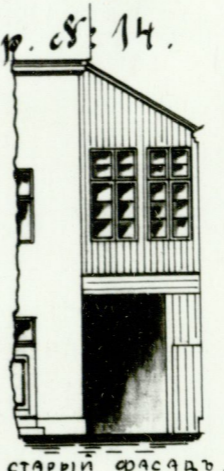




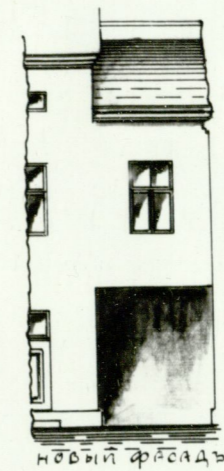




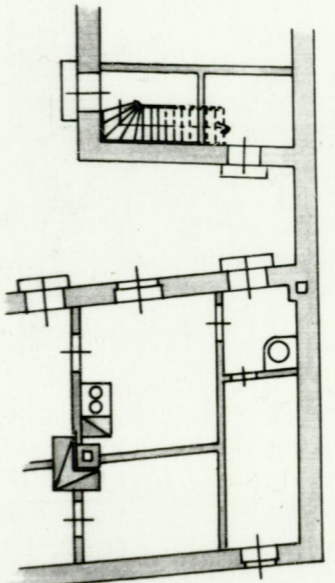
Проектъ постройки стальной камеры въ 2-хъ эт.  
внутри каменного нежилого дома Дворецкого Семёнова  
Судно-дережат. М-ва, распол. въ 1-ой з. з. Дворца по  
Благовому пр. № 14.



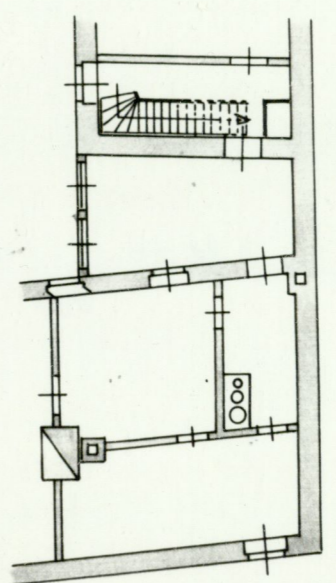
СТАРЫЙ ФАСАДЪ.



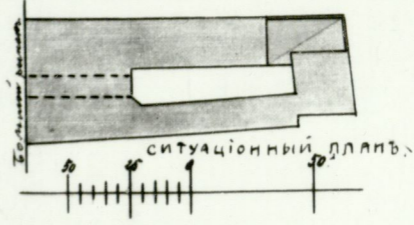
НОВЫЙ ФАСАДЪ.



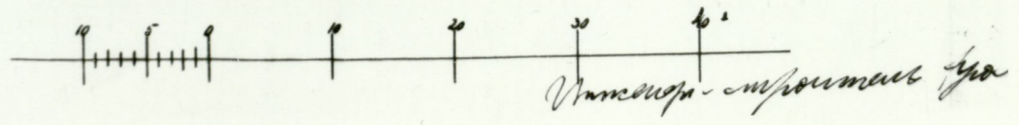
СТАРЫЙ ПЛАНЪ I-го этажа.

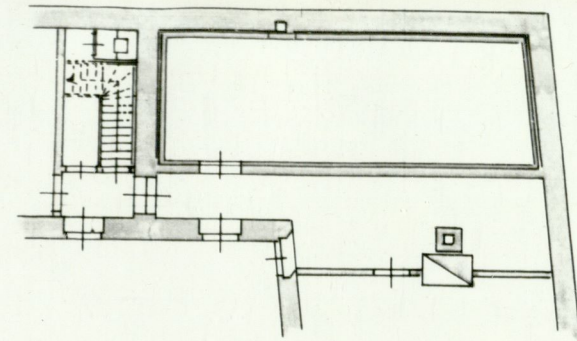


СТАРЫЙ ПЛАНЪ II-го этажа.

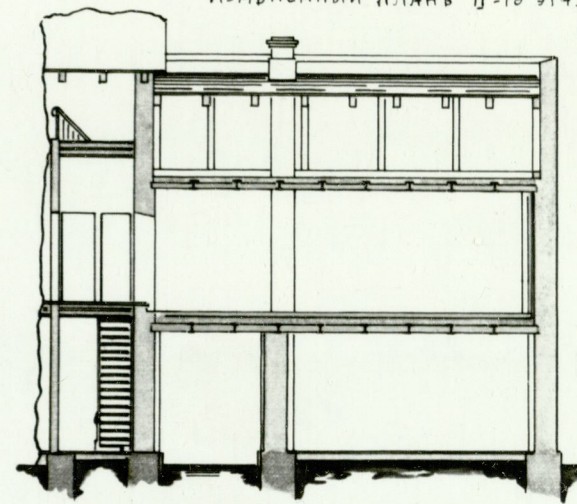


СИТУАЦИОННЫЙ ПЛАНЪ.





ИЗМЕНЕННЫЙ ПЛАН 2-го этажа



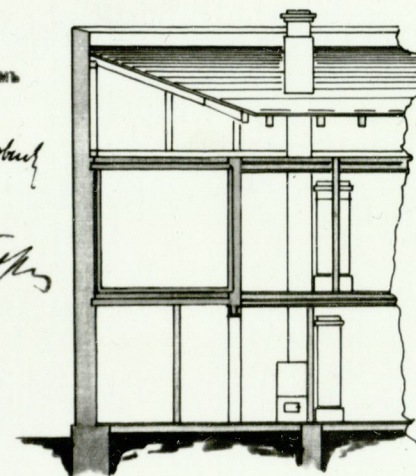
ПРОДОЛЬНЫЙ РАЗРЪЗЪ

Составляет обязательным постановлением г. Юрьева.

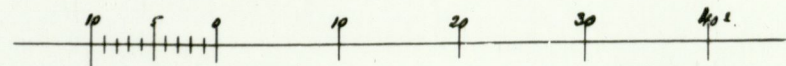
Председатель стр. ком. *Степанов*

Городской архитектор:

*Давыдов*



ПОПЕРЕЧНЫЙ РАЗРЪЗЪ



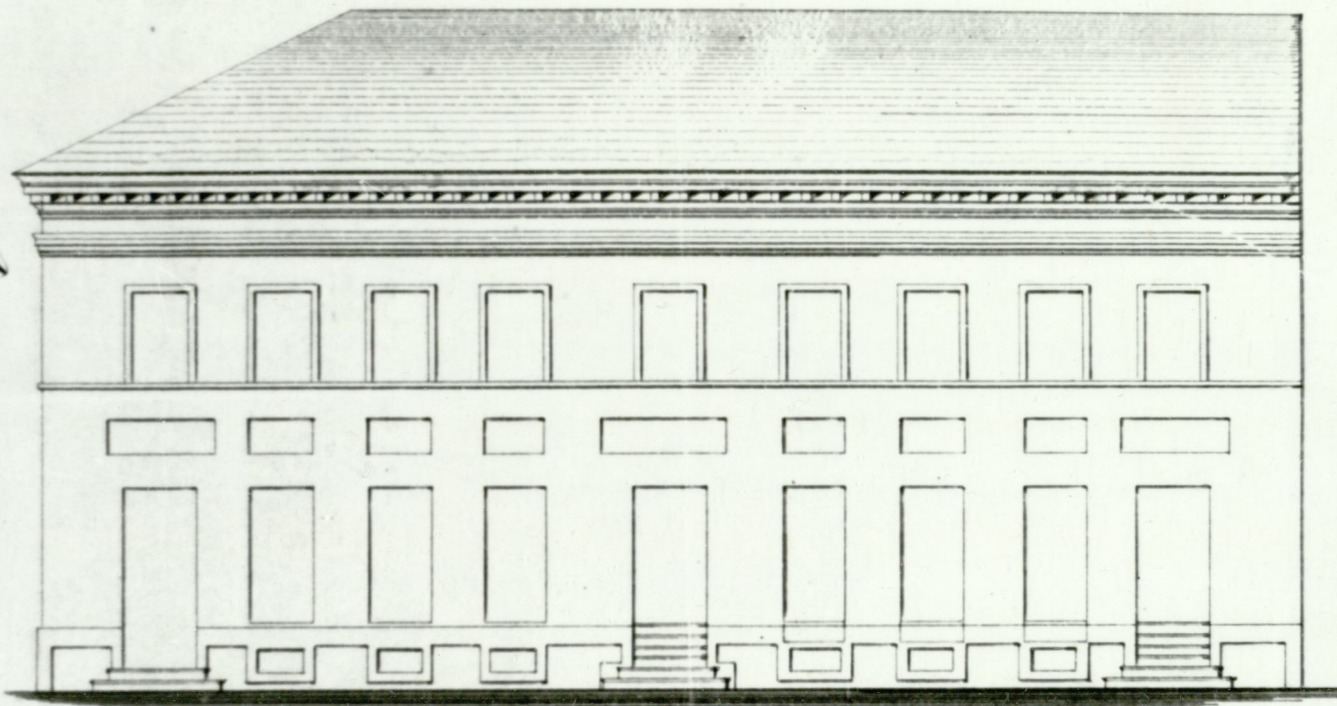
*А. Давыдов, Канц.*



# Планъ 48 51

для увеличенія торговыхъ зеркальныхъ оконъ въ даннъ рас-  
положеннаго въ 1<sup>ей</sup> части города Дерпта за № 3. по  
Кюнкской улицѣ на собственнахъ усадебныхъ мѣстахъ во  
владѣннѣ Господина Антекаря Гарри Улмура.

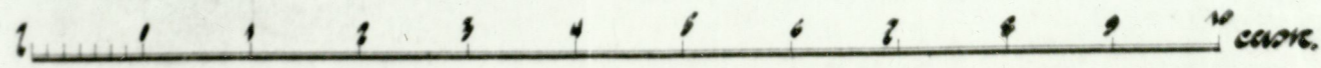
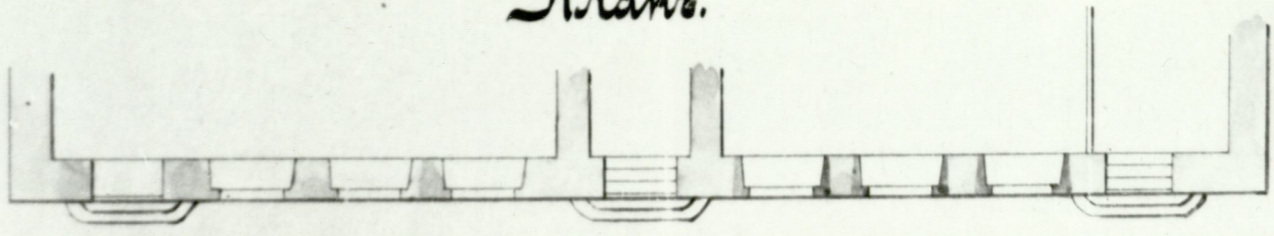
Фасадъ.



Въ планѣ подъ № 1 и 2 показаны  
комнаты, въ планѣ № 3 и 4  
улицы Кюнкской и  
Господина Гарри Улмура

Въ планѣ № 5 и 6 показаны  
спальни, въ планѣ № 7 и 8  
кухня и  
ванная

Планъ.



Проводитъ постройку  
О. Улмура.  
свѣдѣннѣ на мѣстѣ.



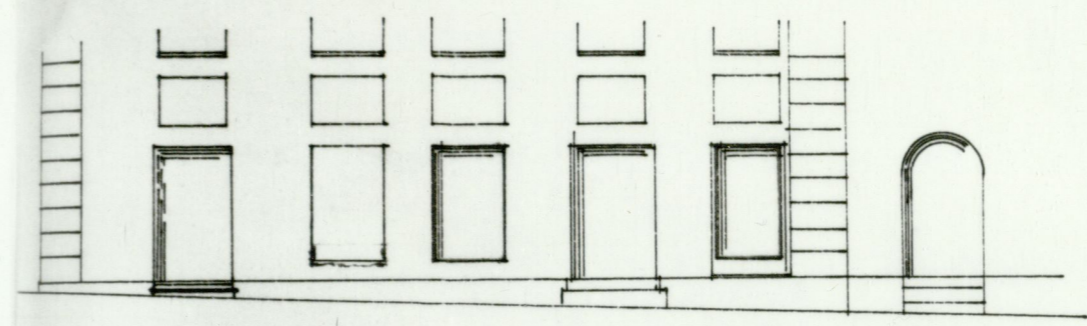


97

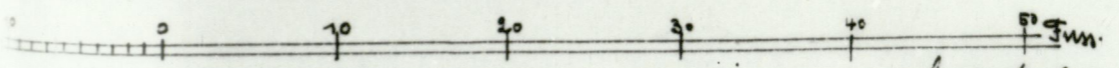
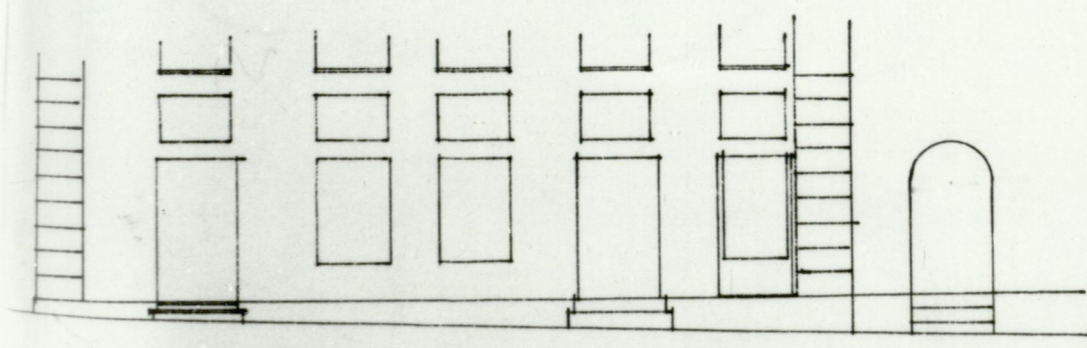
151  
28. Mai 1909.

Fassadenveränderung  
am Wohnhause des Herrn Notarius  
K. Rosenthal in Loppat am  
Grossen Markt No. 2.

Fassade nach der Veränderung



Fassade vor der Veränderung

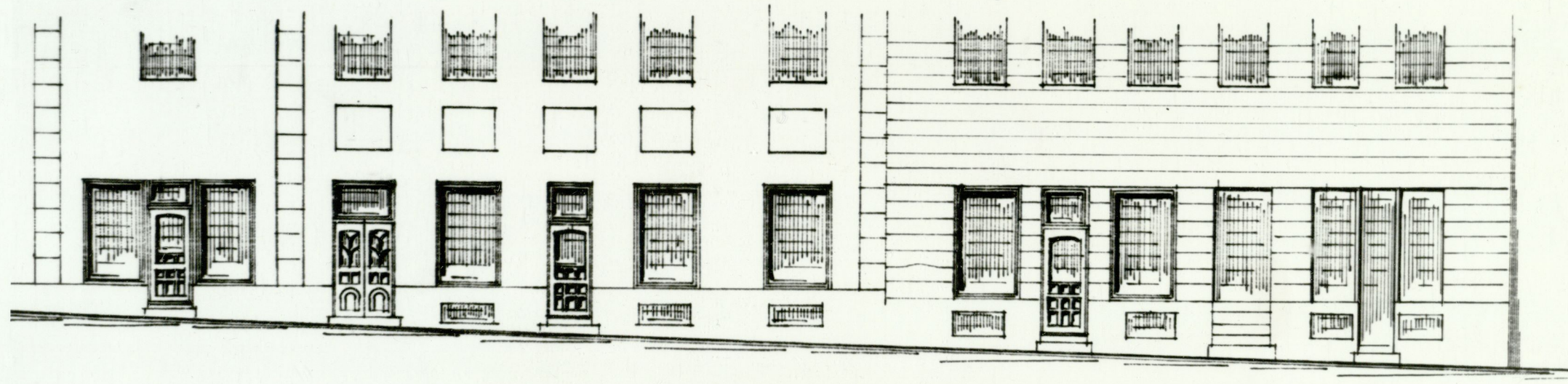


Loppat, den 23. Mai 1909.  
V. Hasler

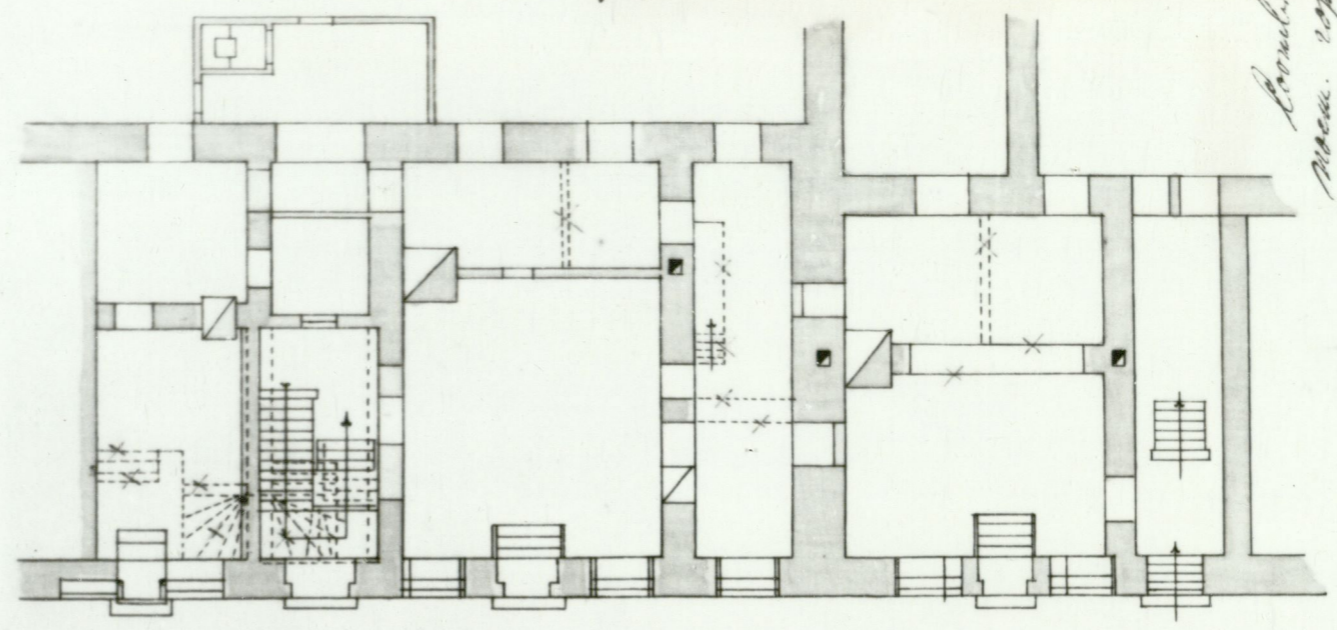
Plan  
zur Änderung der Fassade und  
Änderungen im Innern beim  
Wohnhause des Melarius Stern  
C. Hornthal, Gr. Markt St. 2/4.

30

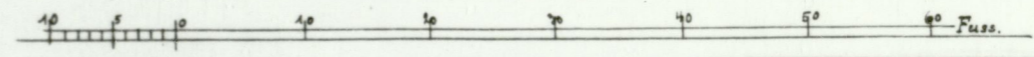
Neue Ansicht.



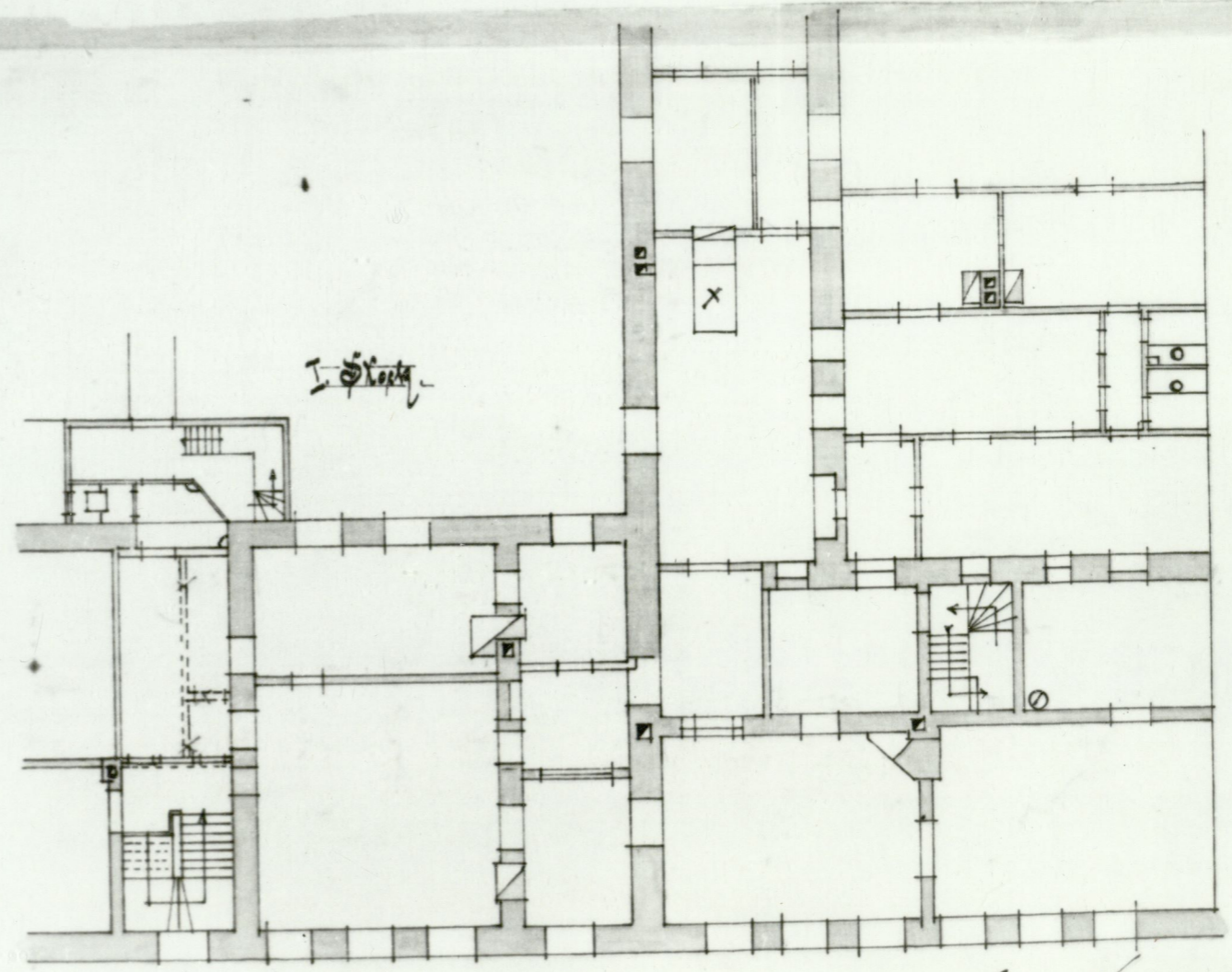
Складская



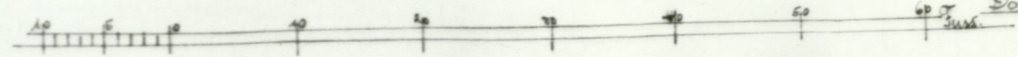
Конструкция  
 по плану  
 архитектора  
 А. К. Ковалев



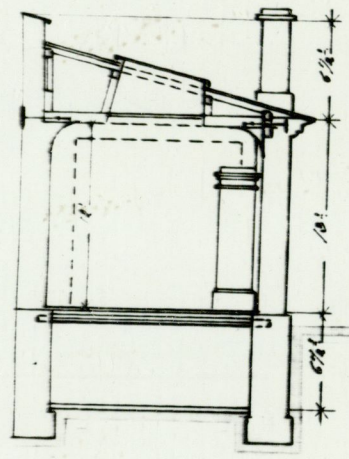
Склад



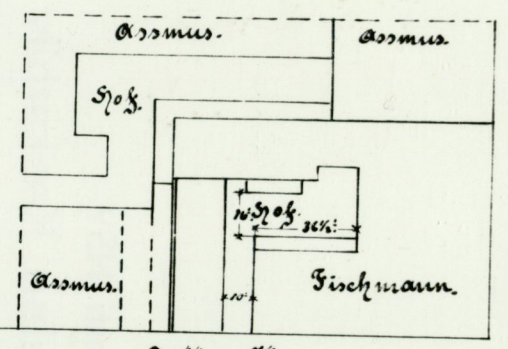
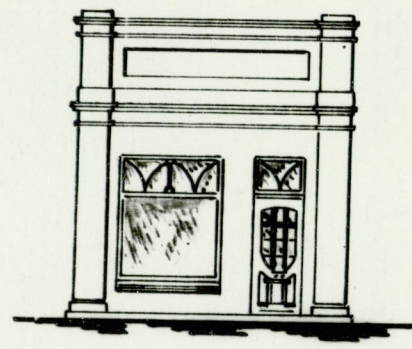
Л. К. Ковалев  
 Дорпат, den 18. Januar 1910  
 K. K. K.



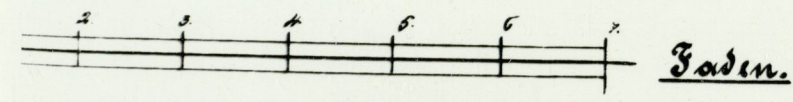
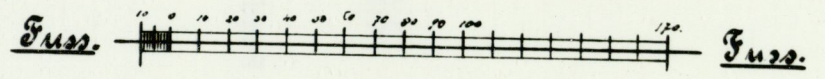
Querschnitt.



Ansicht.



Situation



*Die Leitung abwärts*

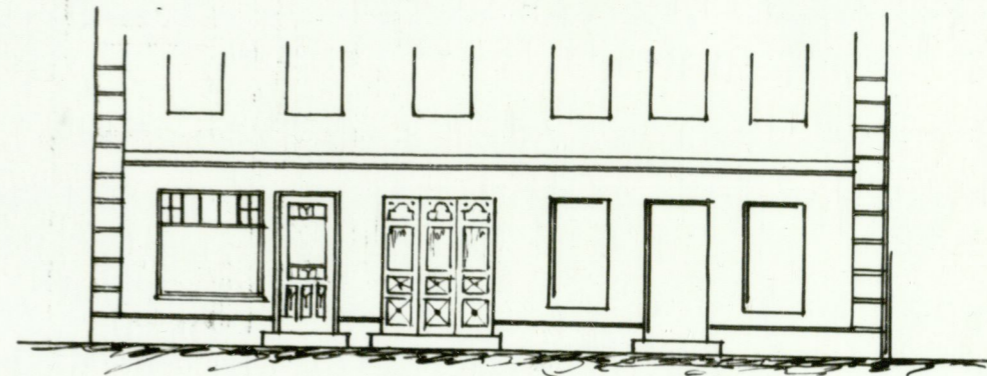
*Abwärts  
Anwärts*

*Alt. F. ...  
17. 11. 18. ...*

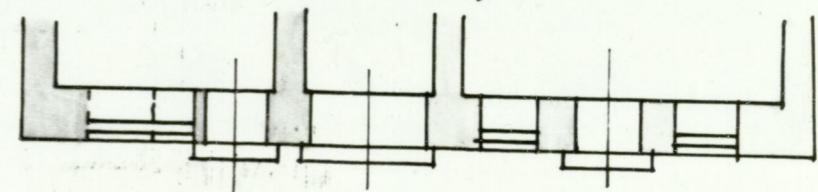
22

- PROJEKT -  
 ZUM LADEN-UMBAU AM WOHN- u. GE-  
 SCHÄFTSHAUSE, IN DER KÜHNSTR. N. 6  
 UND GROSSE MARKT N. 7 IN DORPAT.  
 FÜR HERRN BARON O. STACKELBERG.

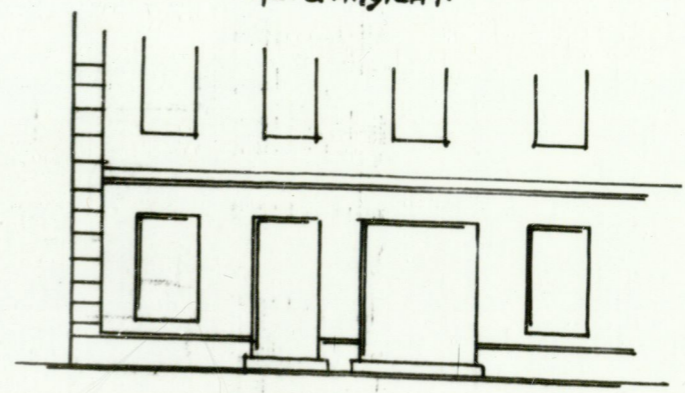
- NEUE ANSICHT GROSSE MARKT.



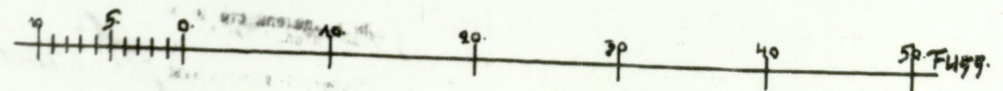
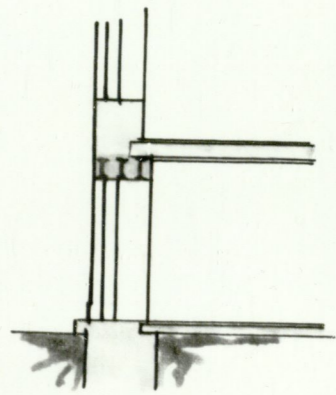
- GRUNDRISS.



- ALTE ANSICHT.

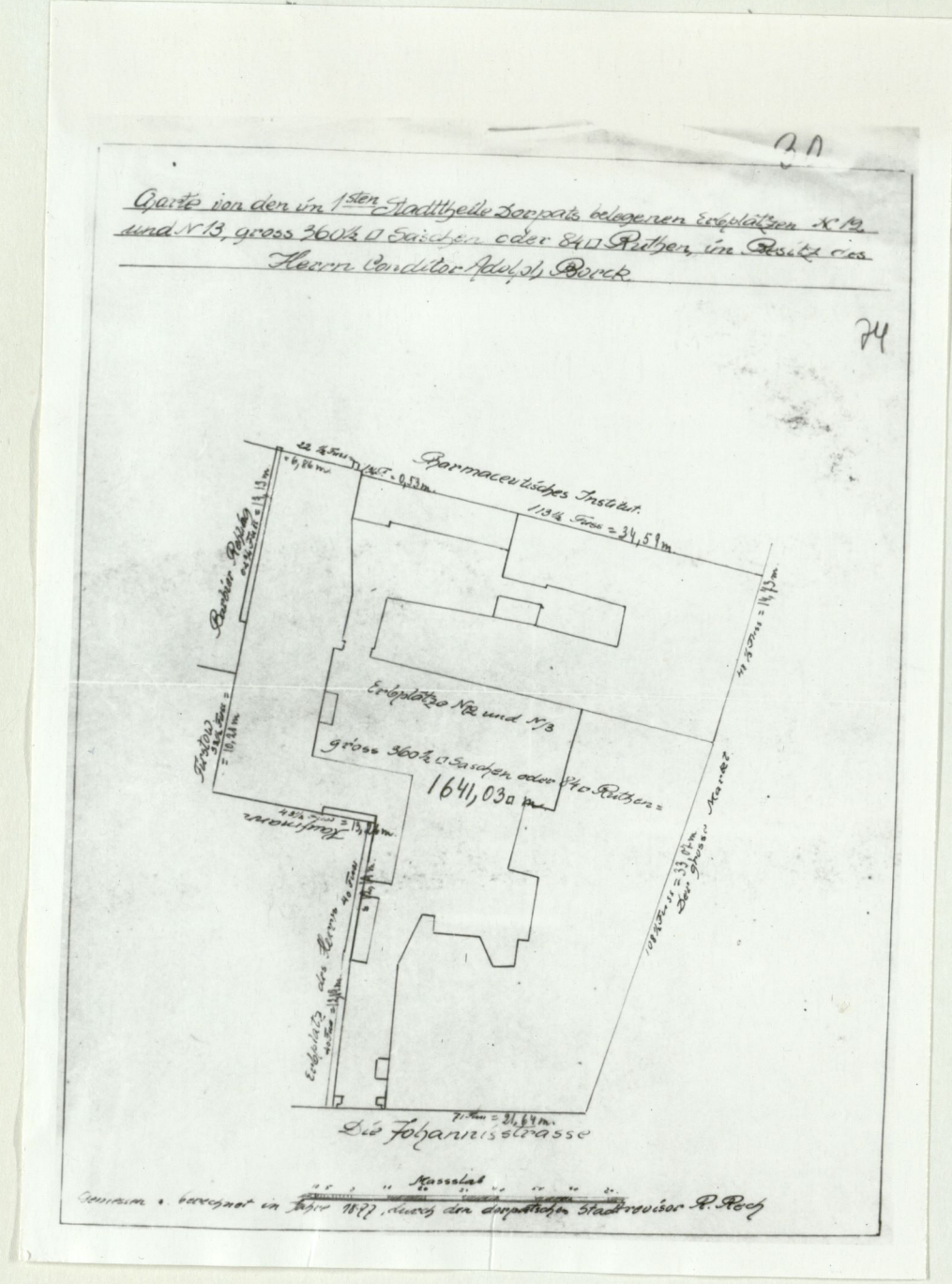


- QUERSCHNITT.

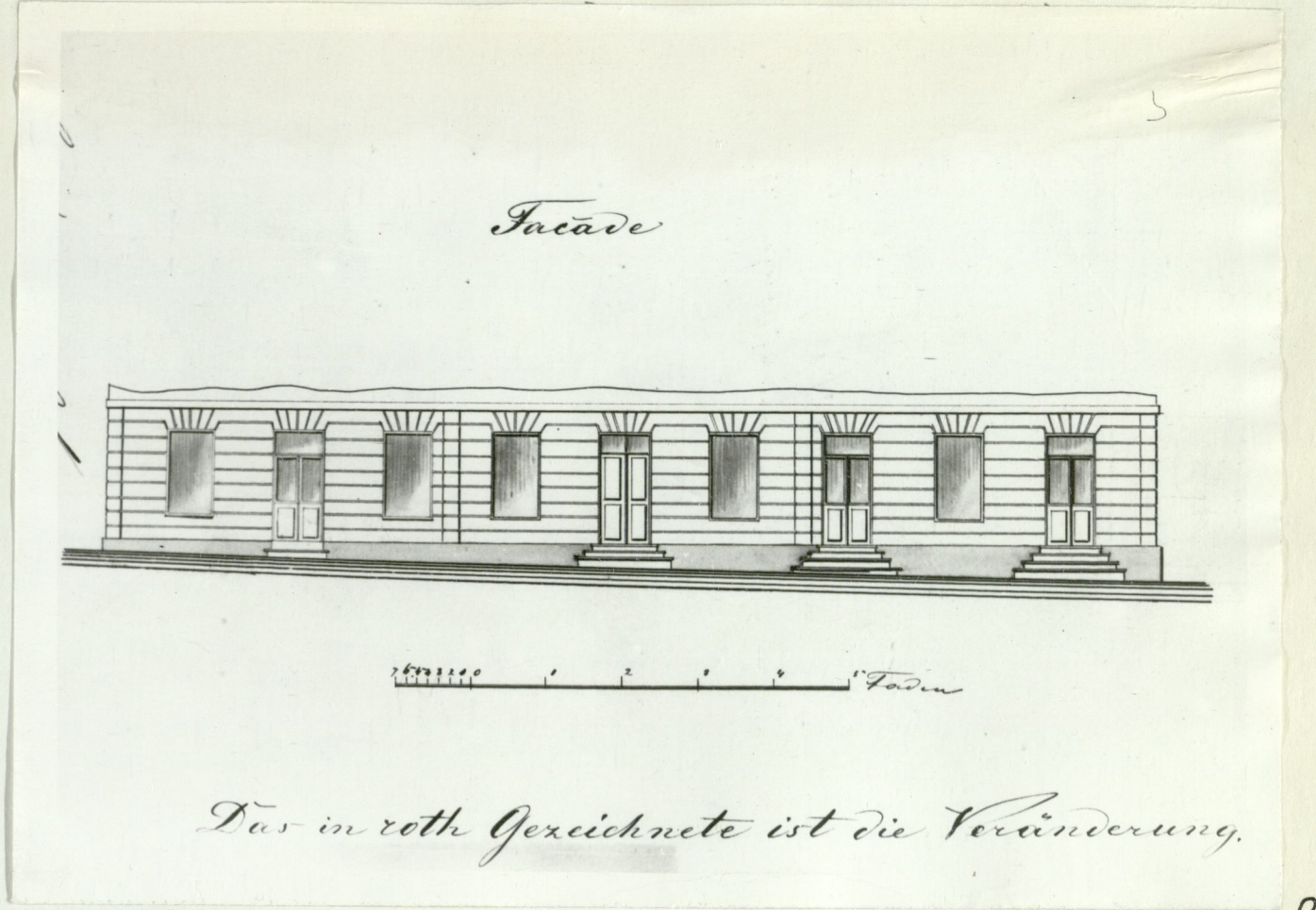


DORPAT, im J. 14

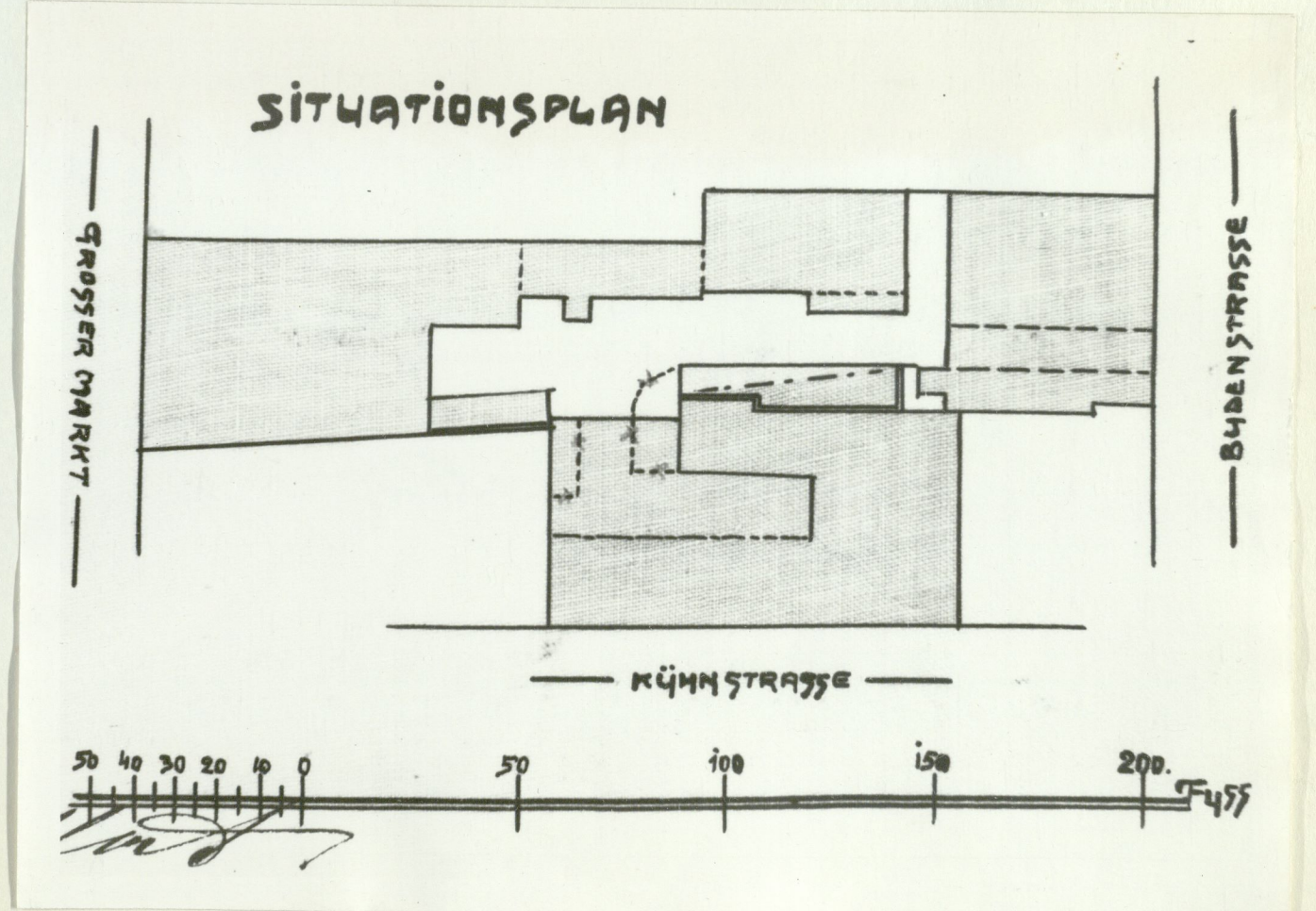




25



26



27

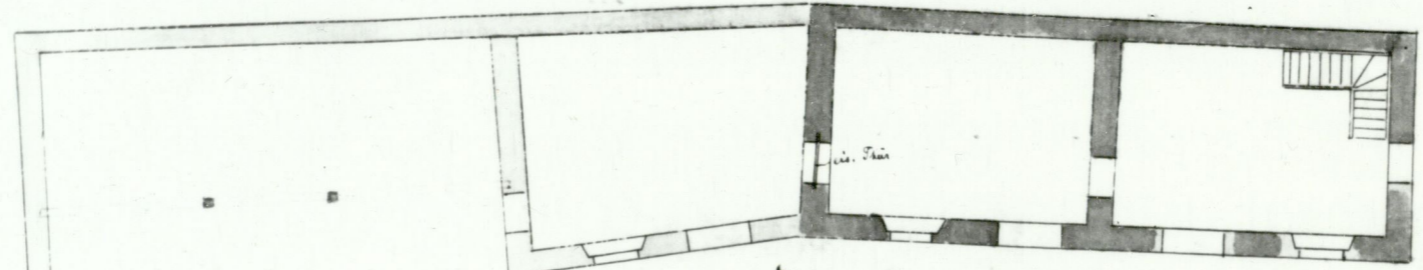




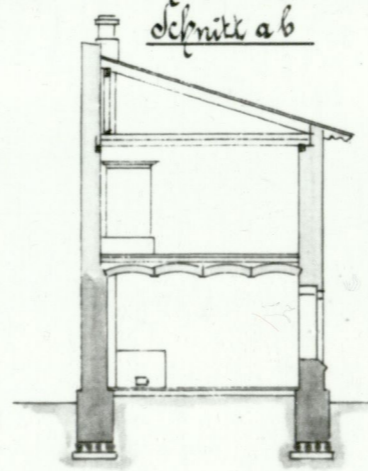
Project

zum Bau eines Speichers und Hauswächterwohnung mit Holzstall  
für Herrn Stadtrath P. Bokownew  
I. Stadtteil, Großer Markt 12.

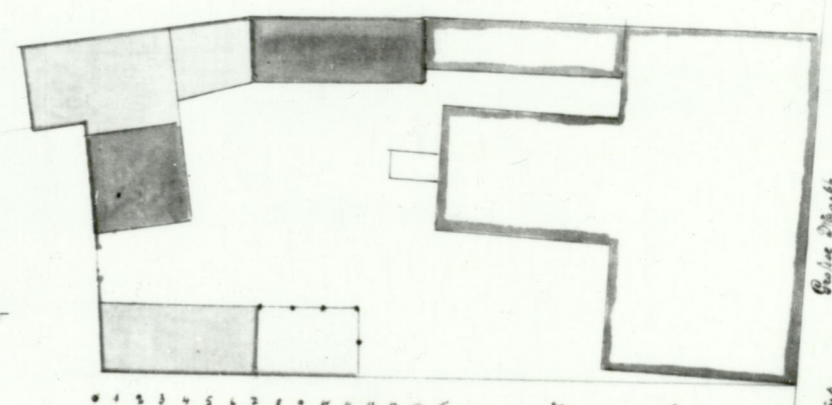
1. Stock



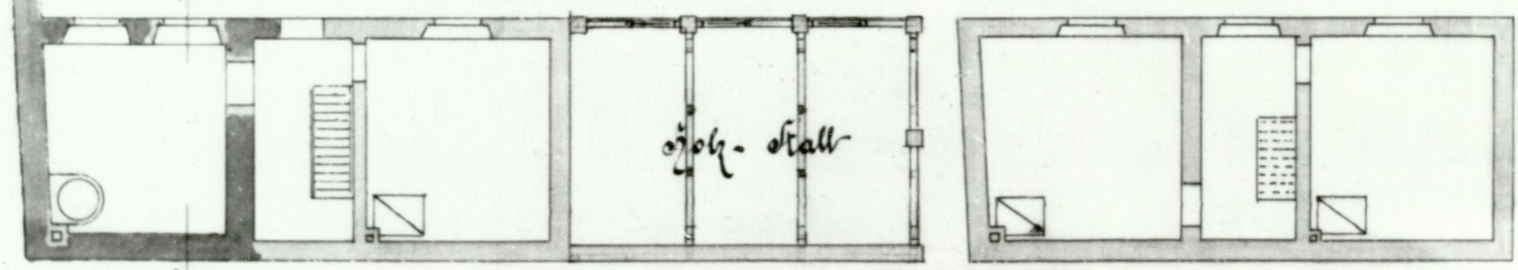
Schnitt a b



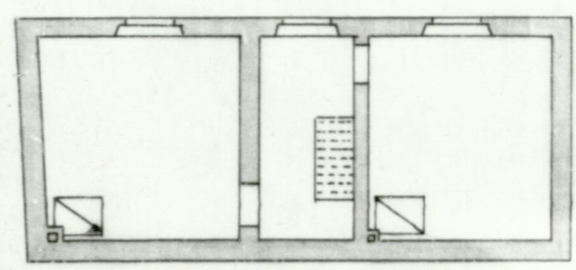
Situations-Plan



Hauswächterwohnung 1. Stock



2. Stock



Bybauwerk zu einem Lagerbauwerk  
Herrn Stadtrath P. Bokownew  
1874

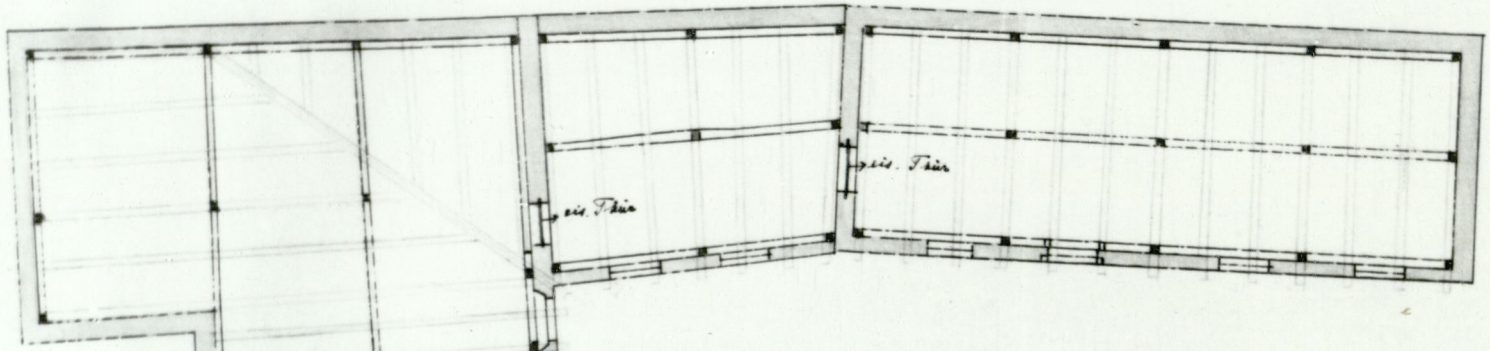
Bybauwerk

Die Zeichnung ist eine  
einfache Skizze und  
nicht ein  
1874

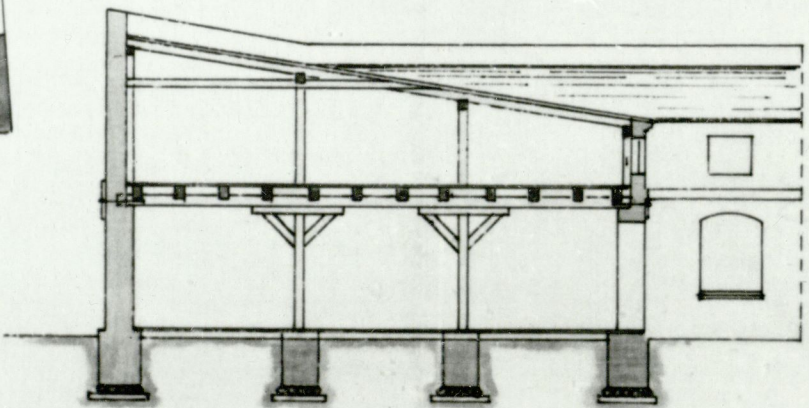
Edm. die Bauleitung überwacht  
Carl Buchholz

Speicher für Herrn Stadtrath P. Pokornow

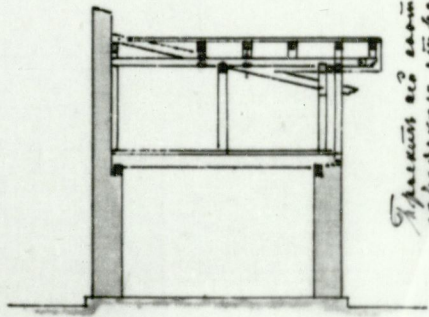
2. Stock



Schnitt cd.



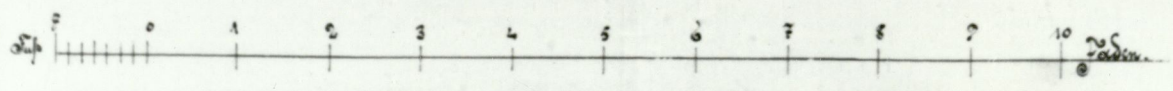
Schnitt ef.



*Handwritten note in German:*  
 Die Decke ist aus Holzbohlen zu machen  
 die Stützen sind aus Eisen zu machen  
 25/11/94  
 F. Schreyer

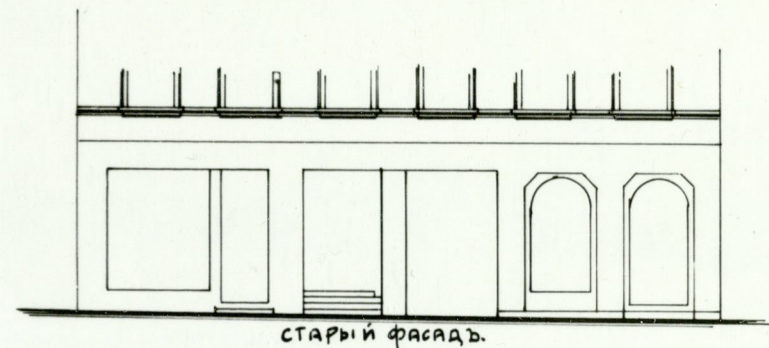
*Vertical handwritten note in German:*  
 Die Decke ist aus Holzbohlen zu machen  
 die Stützen sind aus Eisen zu machen  
 25/11/94  
 F. Schreyer

*Handwritten signature:*  
 in Ausführung übermich:  
 Carl Pöschel

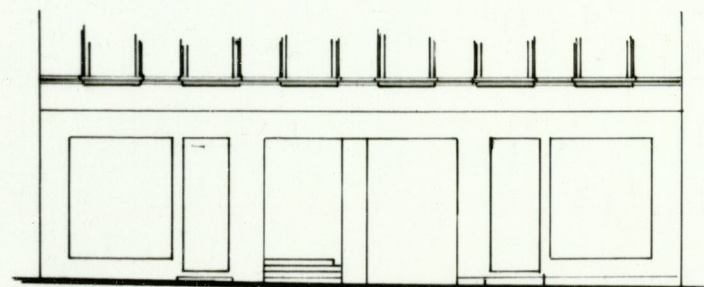


# Проект

измененія фасада Каменного жилого  
дома Юрьевского Эстетическаго Судо-сбере-  
гательнаго П-ва, распол. въ 1-ой ч. г.  
Юрьева по Большойму р. А:



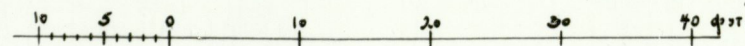
СТАРЫЙ ФАСАДЪ.



ИЗМЕНЕННЫЙ ФАСАДЪ.

Соотвѣтствуетъ обратнымъ  
постановленіямъ г. Юрьева.

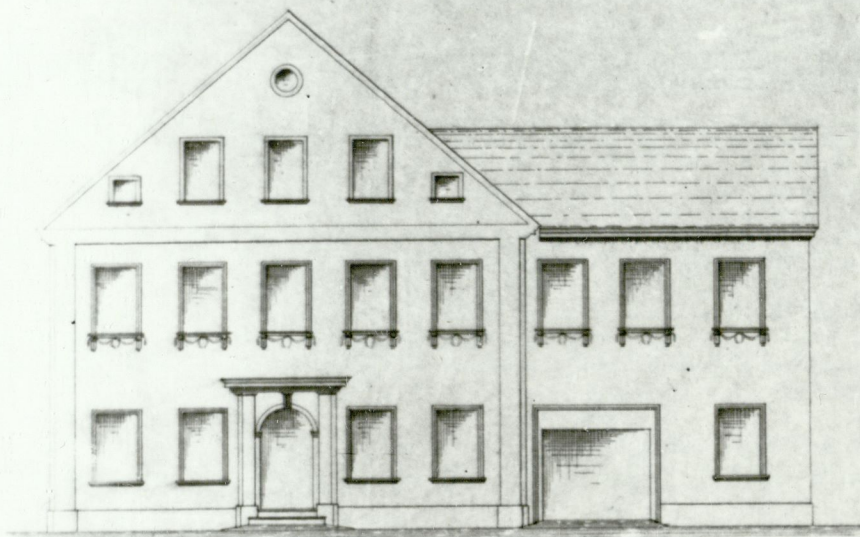
Председатель стр. ком. *И. А.*  
Городской архитекторъ: *Томашевъ*



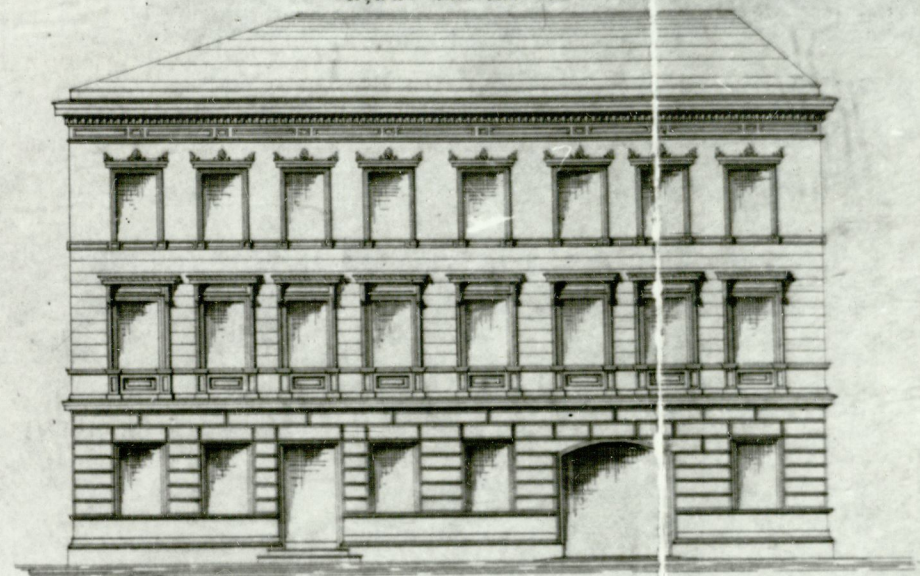
Изготовилъ чертежи *А. Кошкинъ*

Arch. Dopat, Räumensatz, Brief, vom 3. August 1871.

Facade vor dem Umbau.



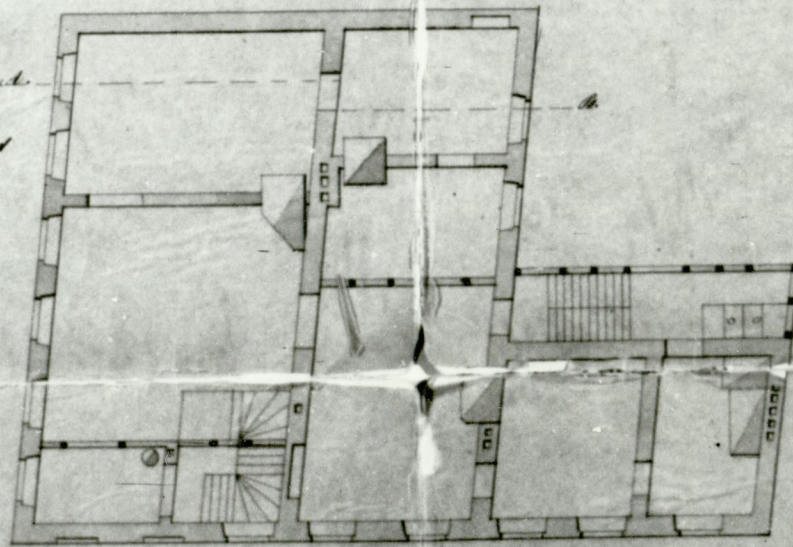
Facade nach dem Umbau.



10.

Grundriss

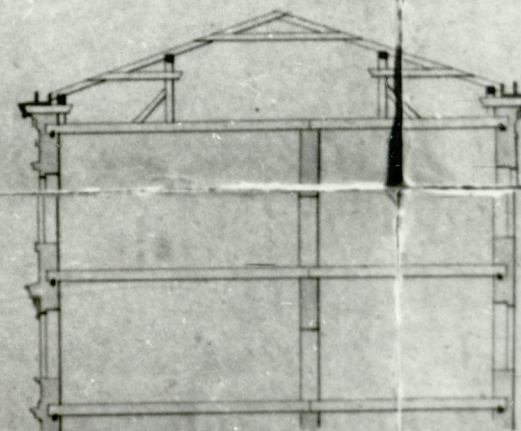
Neu zur Erbauung einer 3<sup>ten</sup> Etage auf dem  
Wingebäude des Herrn Spöcker L. Meier;  
Dopel im 3<sup>ten</sup> Stockteil an der Seite der  
Hallerstraße und dem großen Markt auf Lotgrund  
nach K. gelogen.



H. H. G. G. G.  
Kampel am 21. Juli 1871

*[Handwritten signature]*

Schnitt A-B



Architekt. Dopat vom 21. Juli 1871  
Kampel am 21. Juli 1871

*[Small handwritten note]*

16

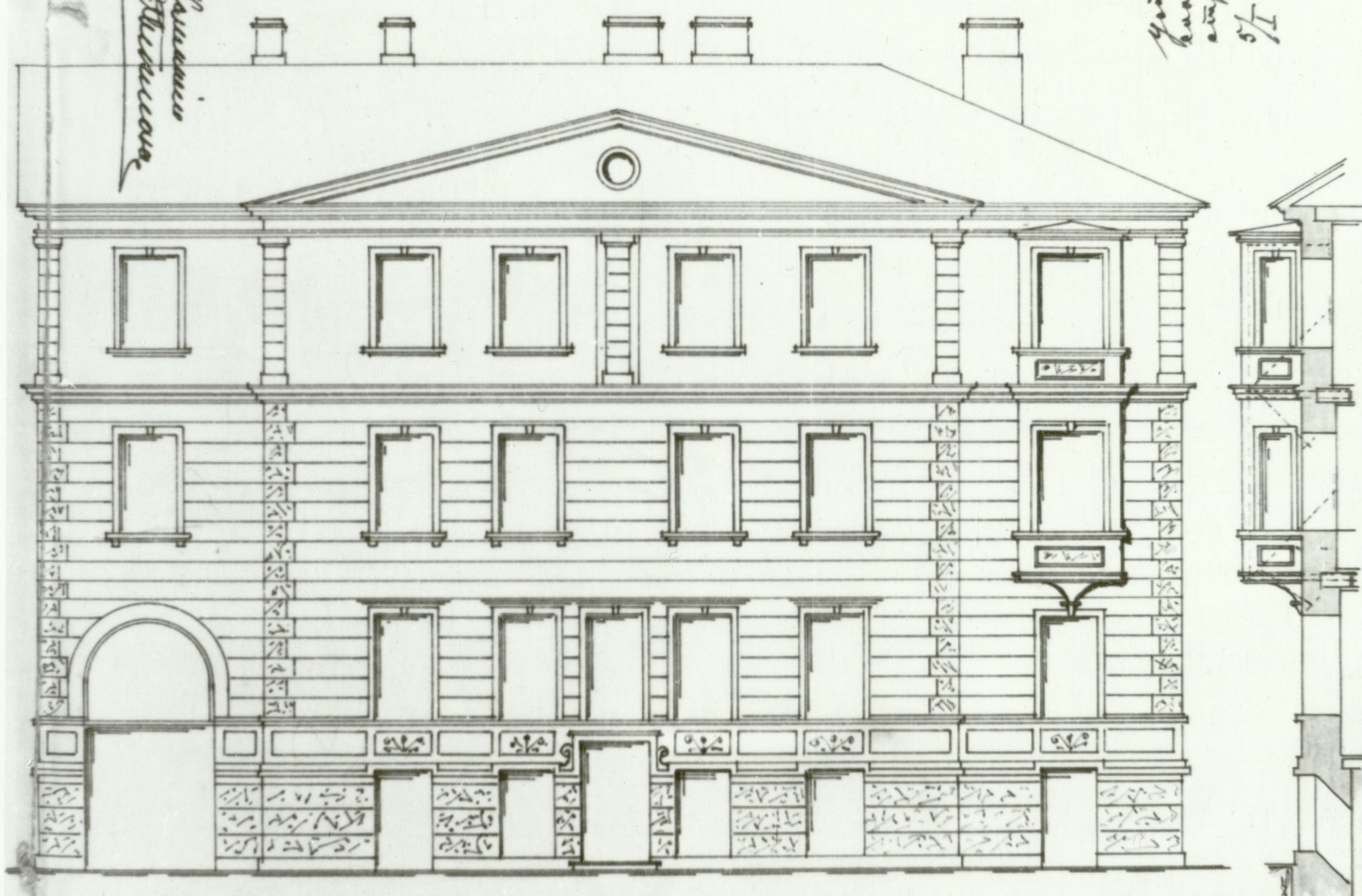
Diplomatische bei unserer  
19/11/04.

Stipendium des  
19/11/04.

Skizze

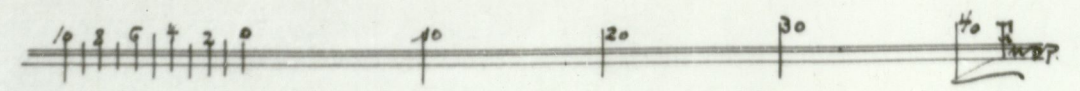
zu einem Erkerbau am Wohnbau des Herrn  
C. Rosenthal an der Ritterstrasse No. 8. in  
Wien.

Projekt des Erkers so auszuführen  
haben mit dem Herrn Rosenthal ab.  
19/11/04. Top. Arch. F. Schick



Ausschnitt an der Ritterstrasse.

Seitenansicht



Wien, den 3. August 1903.

*R. Waldmann*